

Head Office Contact Information

Tel: +971 6 557 4841

Fax: +971 6 557 4842

Email: info@grpindustries.com

Website: www.grpindustries.com

Giant Reinforced Plastic Industries LLC

Industrial Area IV

P.O. Box 6373

Sharjah

United Arab Emirates

Tel: +971 6 533 8512

Fax: +971 6 533 8519

GRP Industries FZC

D4-06 Sharjah Airport International Free Zone

P.O. Box 9291

Sharjah

United Arab Emirates

Tel: +971 6 557 4841

Fax: +971 6 557 4842

Giant Industries FZC

D4-04 Sharjah Airport International Free Zone

P.O. Box 8786

Sharjah

United Arab Emirates

Tel: +971 6 557 4841

Fax: +971 6 557 4842

Giant Reinforced Plastic Industries LLC

Abu Dhabi

United Arab Emirates

Tel: +971 2 447 0202

Fax: +971 6 557 4842

Giant Reinforced Plastic Industries India LLC

F4 1st Floor NDSC 1

New Delhi 110049

India

Tel: +91 11 246 34729

Fax: +91 11 246 35067



Fifth Edition

POLYESTER

ENCLOSURES • KIOSKS • POLYSHADES



Index

• Company Profile	2
• Product Portfolio	3
• Single Door Enclosure	4 - 5
• Double Door Enclosure	6 - 7
• Metering Enclosure	8 - 9
• Multi Window Metering Enclosure	10 - 11
• Integrated Canopy Enclosure	12 - 13
• Junction Box	14 - 15
• CATV / Telephone Enclosure	16 - 17
• CATV / Telephone Junction Box	18 - 19
• Fire / Safety Equipment Enclosure	20 - 21
• Battery Box	22 - 23
• Water Meter Enclosure	24 - 25
• SCADA System Enclosure	26
• Bulk & Area Metering Enclosure	27
• Instrument Enclosure	28 - 29
• Instrument Polyshade	30 - 31
• Package Substation Kiosk	32 - 33
• Capacitor Bank Kiosk	34 - 35
• Kiosk (Insulated/ Non-Insulated)	36 - 37
• Shelters/Housing	38 - 39
• DEWA Enclosures	40 - 41
• ADWEA Enclosures	42 - 43
• Custom Manufactured Products	44 - 45
• Project Supply Record	46 - 49
• Location Map	50





Company Profile



Giant Reinforced Plastic (GRP) Industries was founded in Sharjah, United Arab Emirates in 1989, as a member of the Giant Group. Its vision was to become a manufacturer specializing in the production of glass reinforced polyester enclosures and kiosks for application in the electrical industry. In its inception, GRP Industries was the key driver in advising the local electricity and water authorities in the U.A.E. on the advantages of polyester products; and assisted Dubai Electricity & Water Authority (DEWA) in formulating the specifications for electrical enclosures and kiosks.

Since then, GRP Industries has grown to become the largest manufacturer of polyester enclosures and kiosks in the Middle East. Its products are certified and utilized by the water and electricity governing bodies of several MENA countries, such as Saudi Arabia, Iraq and Egypt. For an extensive list of clients and projects, please see our project supply record.

GRP Industries' manufacturing facilities cover an area of 130,000 sq. ft. and are spread across three production units.

The company has the capability to manufacture by contact molding, injection molding and cold press molding.

Being an ISO 9001 certified organization, it understands that quality is one of GRP Industries' USP and therefore is continuously engaged in implementing the latest technology in composites manufacturing.

The key principle is to ensure consistent high quality by maintaining strict quality control procedures at every step of the manufacturing process.

The company believes in personalized sales and after-sales service, which have been the driving forces in understanding the requirements of clients. Teams of qualified engineers and experienced marketing personnel have ensured customer satisfaction and found more avenues for innovative products and tailor-made services.

You are guaranteed high product quality and customer satisfaction when you deal with GRP Industries.



Product Portfolio

GRP Industries' products are manufactured in glass fiber reinforced polyester material that is molded by either contact or injection molding processes. These molding processes are advantageous for designing and manufacturing products that are suitable for producing weather resistant products for outdoor application in high temperature and humidity conditions that prevail in the Middle East. Our production process entails every aspect of the manufacturing from designing to packaging of the product.

GRP Industries has the capability to perform all the following processes in-house:

1. Mold Design
2. Carpentry
3. Fabrication
4. Lamination
5. Cutting & Sanding
6. Assembly & Finishing
7. Packaging

Our manufacturing methods and the technology of GRP offer our products the following advantages:

1. Protective layer of 400 microns gelcoat against weathering by exposure to visible light, ultraviolet radiation and humidity
2. Design freedom that allows products to be easily tooled, molded and manufactured to meet almost any specification, because there are few constraints on size, shape, color or finish.
3. Versatility with reduced weight and high strength
4. Non corrosive and non conductive
5. Durability with exceedingly long life span
6. Low maintenance with very little requirement or no maintenance
7. Molded appearance with a choice of flat, semi-gloss or high gloss color

Listed below are some of the applications GRP products are utilized for:

- A. Feeder Pillars
- B. Electric Meter Cabinets
- C. Water Meter Cabinets
- D. Fire Equipment Cabinets
- E. Service Struts
- F. Housing for Package Substation
- G. Housing for Capacitor Banks
- H. Housing for Analyzers
- I. Instrument Sunshades

GRP products can be seen installed in the electrical and water distribution network of the United Arab Emirates and other Gulf Cooperation Council countries since 1989. GRP Industries is an approved vendor with the local and international utilities authorizing bodies in the region.



Polyester Enclosure Single Door IP-55/65/66

Standard Features

- Ingress protection to IP66/IP65/IP55 & lower
- Weatherproof & rigid construction, suitable for outdoor use
- High impact, corrosion & temperature resistant
- Liftoff type chrome plated brass hinges
- Full rain canopy
- □ key locks, zinc die cast & chrome plated – 2 nos
- Studs on back wall for mounting plate fixing
- Wall thickness 4 mm generally & 6 mm at stress points
- Fire retardant, self extinguishing to BS 476: Part 7: 1997 Class 2
- External finish: Plain semi gloss light grey gelcoat finish to RAL 7035
- Long life & high temperature resistant EPDM rubber door seal
- All hardware of galvanized steel or non-corrosive material

Options

- Cylinder key lock with handle & dust cap
- Swing handle type locking arrangement
- Wing type lock, with/without key
- Stainless steel hardware
- Pad locking facility
- Higher wall thickness
- Higher fire rating
- Insulated construction with encapsulated PU foam
- Anti-vandal construction with encapsulated WBP plywood
- Additional internal door
- External finish in colours as per standard chart below

Accessories

- Mounting plate
- Gland plate
- Lifting hooks
- Door stays
- Drawing pocket
- Wall mounting brackets
- UV resistant transparent window
- Pedestal
- Ventilators*

Standard Colours

- ◆ Light Grey - RAL 7035
- ◆ Pure White - RAL 9010
- ◆ Light Ivory - RAL 1015
- ◆ Grass Green - RAL 6010
- ◆ Flame Red - RAL 3000
- Other colours on special request

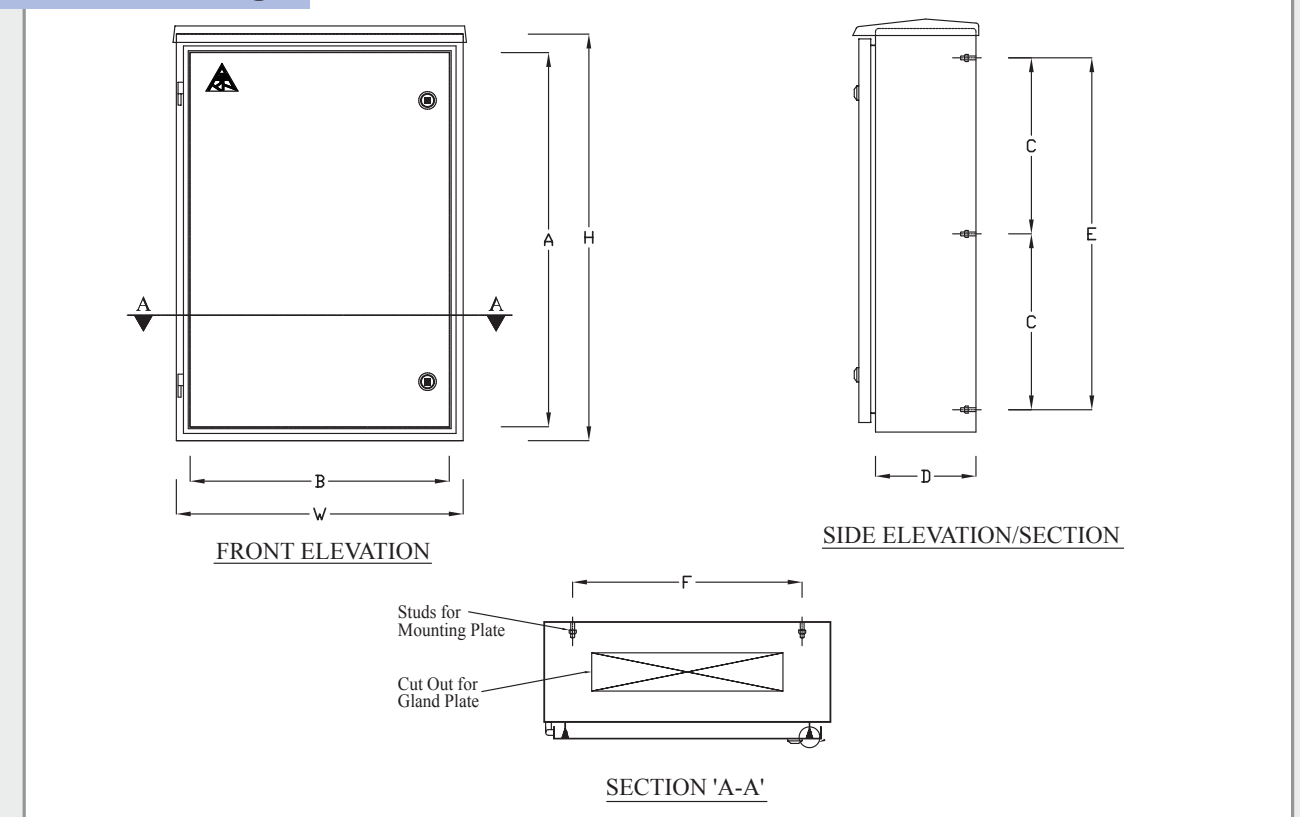
* Addition of ventilator may hamper ingress protection



Installation: Floor Mounting or Free Standing

Polyester Enclosure Single Door IP-55/65 (i) / 66 (ii)

General Drawing



Sizes Available

All dimensions in mm

PRODUCT REFERENCE	INTERNAL SIZE			CLEAR OPENING		C/C OF STUDS			CUT OUT FOR GLAND PLATE
	HEIGHT H	WIDTH W	DEPTH D	A	B	C	E	F	
S 08062 S 08062 i / S 08062 ii	800	600	200	700	500	---	650	480	400 X 80
S 08052 S 08052 i / S 08052 ii	850	550	280	750	460	---	650	450	400 X 120
S 085062 S 085062 i / S 085062 ii	850	600	200	750	500	---	650	480	400 X 80
S 08083 S 08083 i / S 08083 ii	800	800	300	700	700	---	600	680	600 X 150
S 10062 S 10062 i / S 10062 ii	1000	600	250	900	500	---	800	480	400 X 120
S 10082 S 10082 i / S 10082 ii	1000	800	250	900	700	---	800	680	600 X 120
S 10083 S 10083 i / S 10083 ii	1000	800	300	900	690	---	800	680	600 X 150
S 10094 S 10094 i / S 10094 ii	1000	900	400	900	800	---	800	780	700 X 200
S 12083 S 12083 i / S 12083 ii	1200	850	300	1100	740	500	---	680	600 X 150
S 12086 S 12086 i / S 12086 ii	1200	850	600	1100	750	500	---	680	600 X 250
S 13084 S 13084 i / S 13084 ii	1300	800	400	1200	700	590	---	680	600 X 200
S 14083 S 14083 i / S 14083 ii	1400	800	300	1280	690	590	---	680	600 X 150
S 19075 S 19075 i / S 19075 ii	1900	700	500	1800	600	860	---	570	450 X 250

For any other size please call for quotation. Design details from those shown can be changed without prior notice.

Polyester Enclosure Double Door IP-55/65/66

Standard Features

- Ingress protection to IP66/IP65/IP55 & lower
- Weatherproof & rigid construction, suitable for outdoor use
- High impact, corrosion & temperature resistant
- Liffroff type chrome plated brass hinges
- Full rain canopy
- Swing handle type 3 point locking arrangement with dust cap
- Studs on back wall for mounting plate fixing
- Wall thickness 4 mm generally & 6 mm at stress points
- Fire retardant, self extinguishing to BS 476: Part 7: 1997 Class 2
- External finish: Plain semi gloss light grey gelcoat finish to RAL 7035
- Long life & high temperature resistant EPDM rubber door seal
- All hardware of galvanized steel or non-corrosive material

Options

- Stainless steel hardware
- Cylinder key lock with handle & dust cap
- Lifting hooks
- Pad locking facility
- Higher wall thickness
- Higher fire rating
- Insulated construction with encapsulated PU foam
- Anti-vandal construction with encapsulated WBP plywood
- Additional internal door
- External finish in colours as per standard chart below

Accessories

- Mounting plate
- Gland plate
- Lifting hooks
- Door stays
- Drawing pocket
- Wall mounting brackets
- UV resistant transparent window
- Pedestal
- Ventilators*

Standard Colours

- ◆ Light Grey - RAL 7035
- ◆ Pure White - RAL 9010
- ◆ Light Ivory - RAL 1015
- ◆ Grass Green - RAL 6010
- ◆ Flame Red - RAL 3000
- Other colours on special request

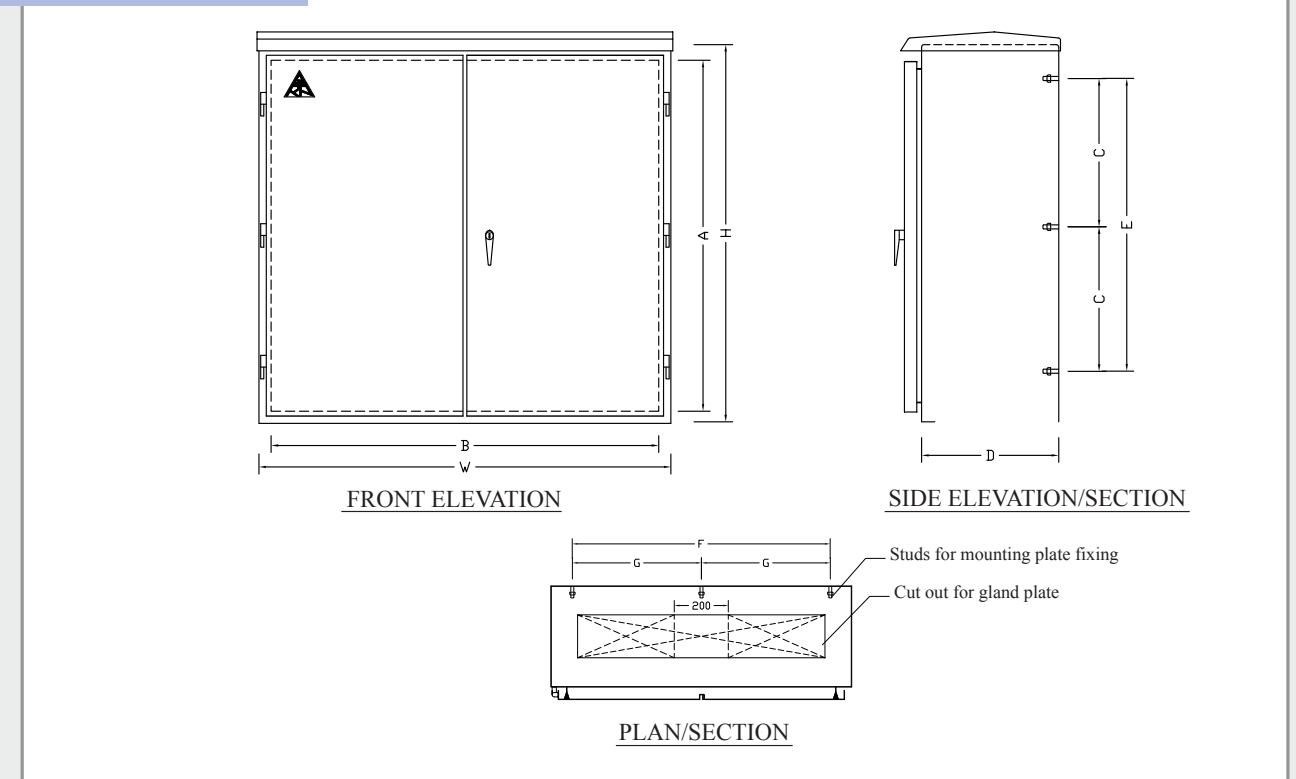
* Addition of ventilator may hamper ingress protection



Installation: Floor Mounting or Free Standing

Polyester Enclosure Double Door IP-55 / 65 (i) / 66 (ii)

General Drawing



Sizes Available

All dimensions in mm

PRODUCT REFERENCE	INTERNAL SIZE			CLEAR OPENING		C/C OF STUDS				CUT OUT FOR GLAND PLATE
	HEIGHT H	WIDTH W	DEPTH D	A	B	C	E	F	G	
D 07092 D 07092 i / D 07092 ii	750	900	250	650	800	---	540	780	---	600 X 120
D 10083 D 10083 i / D 10083 ii	1000	800	300	900	690	---	800	680	---	600 X 150
D 10103 D 10103 i / D 10103 ii	1000	1000	300	900	880	---	800	850	---	800 X 150
D 12103 D 12103 i / D 12103 ii	1200	1000	300	1060	880	500	---	850	---	800 X 150
D 12104 D 12104 i / D 12104 ii	1200	1000	400	1060	880	500	---	850	---	800 X 200
D 12123 D 12123 i / D 12123 ii	1200	1200	300	1100	1100	500	---	---	525	400 X 150 X (2)
D 12134 D 12134 i / D 12134 ii	1200	1350	400	1060	1240	500	---	---	590	475 X 200 X (2)
D 12153 D 12153 i / D 12153 ii	1200	1500	300	1100	1400	500	---	---	675	475 X 150 X (2)
D 12126 D 12126 i / D 12126 ii	1200	1200	600	1100	1100	500	---	---	525	400 X 200 X (2)
D 14104 D 14104 i / D 14104 ii	1400	1000	400	1280	880	590	---	880	---	800 X 200
D 15125 D 15125 i / D 15125 ii	1500	1200	500	1380	1080	590	---	---	525	400 X 200 X (2)
D 15155 D 15155 i / D 15155 ii	1500	1500	500	1380	1380	590	---	---	675	475 X 200 X (2)
D 15214 D 15214 i / D 15214 ii	1500	2100	400	1380	1980	590	---	---	975	800 X 200 X (2)
D 16104 D 16104 i / D 16104 ii	1600	1000	400	1480	880	590	---	850	---	800 X 200
D 16154 D 16154 i / D 16154 ii	1600	1500	400	1480	1380	590	---	---	675	475 X 200 X (2)
D 18124 D 18124 i / D 18124 ii	1800	1200	400	1680	1080	800	---	---	525	400 X 200 X (2)
D 21136 D 21136 i / D 21136 ii	2150	1350	600	2030	1230	975	---	---	590	475 X 200 X (2)

For any other size please call for quotation. Design details from those shown can be changed without prior notice.

Polyester Enclosure Metering Cabinet IP-55/65/66

Standard Features

- Ingress protection to IP66/IP65/IP55 & lower
- Weatherproof & rigid construction, suitable for outdoor use
- High impact, corrosion & temperature resistant
- Liftoff type chrome plated brass hinges
- Awning type canopy above the door
- Meter viewing window (on request)
- key locks, zinc die cast & chrome plated – 2 nos
- Studs on back wall for mounting plate fixing
- Wall thickness 3 mm generally & 5 mm at stress points
- Fire retardant, self extinguishing to BS 476: Part 7: 1997 Class 2
- External finish: Plain semi gloss light grey gelcoat finish to RAL 7035
- Long life & high temperature resistant EPDM rubber door seal
- All hardware of galvanized steel or non-corrosive material

Options

- Cylinder key lock with handle & dust cap
- Swing handle type locking arrangement
- Wing type lock, with/without key
- Stainless steel hardware
- Pad locking facility
- Higher wall thickness
- Higher fire rating
- Facility to put utility authority seal
- External finish in colours as per standard chart below
- Additional internal door

Accessories

- Mounting plate
- Gland plate
- Wall mounting brackets
- Ventilators*

Standard Colours

- ◆ Light Grey - RAL 7035
- ◆ Pure White - RAL 9010
- ◆ Light Ivory - RAL 1015
- ◆ Grass Green - RAL 6010
- ◆ Flame Red - RAL 3000
- Other colours on special request

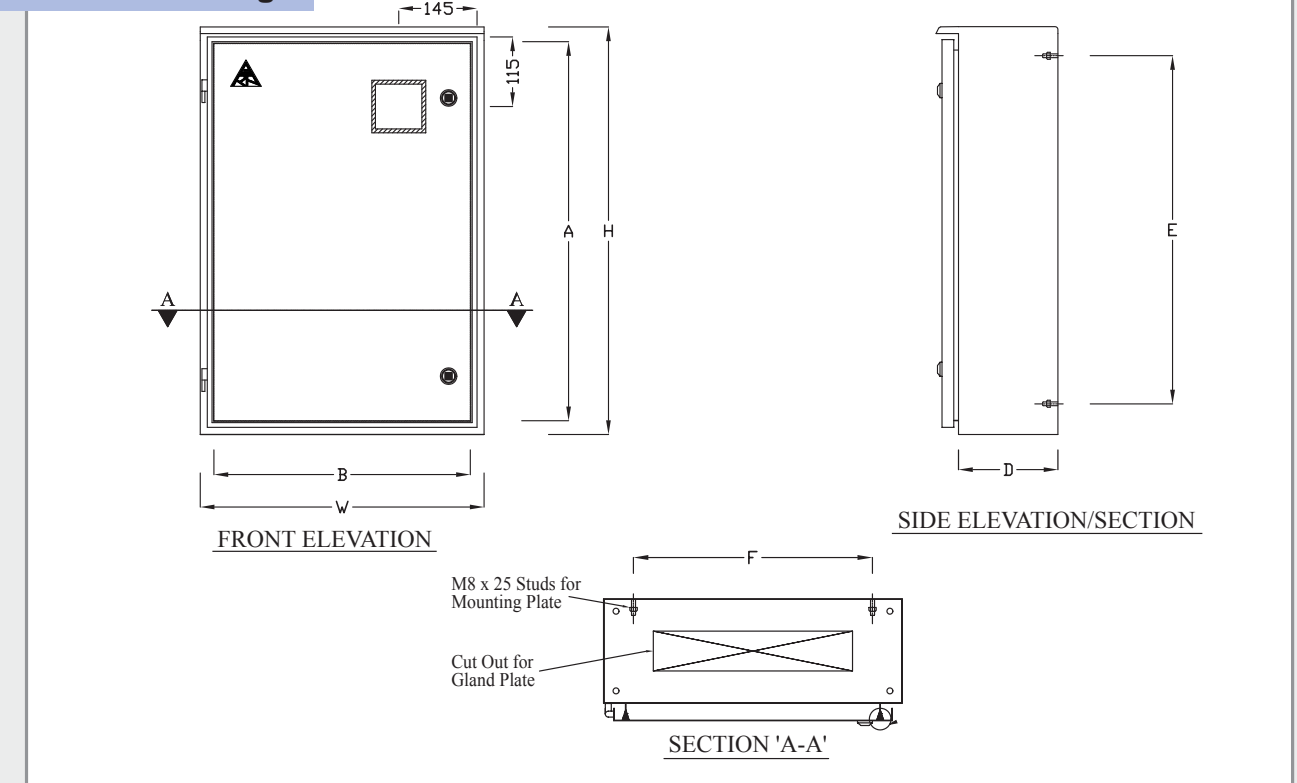
* Addition of ventilator may hamper ingress protection



Installation: Flush/Wall/Floor Mounting or Free Standing

Polyester Enclosure Metering Cabinet IP-55/65 (i) / 66 (ii)

General Drawing



Sizes Available

All dimensions in mm

PRODUCT REFERENCE	INTERNAL SIZE			CLEAR OPENING		C/C OF STUDS		CUT OUT FOR GLAND PLATE
	HEIGHT H	WIDTH W	DEPTH D	A	B	E	F	
M 03021* M 03021 i / M 03021 ii	300	200	120	250	145	210	---	---
M 04031 M 04031 i / M 04031 ii	450	300	180	405	250	300	230	200 X 60
M 04042 M 04042 i / M 04042 ii	450	400	200	350	310	300	300	300 X 80
M 05052 M 05052 i / M 05052 ii	520	520	200	400	400	350	400	400 X 80
M 05053 M 05053 i / M 05053 ii	500	500	300	395	395	345	400	350 X 150
M 05054 M 05054 i / M 05054 ii	500	500	400	395	395	345	400	350 X 150
M 060452 M 060452 i / M 060452 ii	600	450	250	500	350	450	350	350 X 120
M 060425 M 060425 i / M 060425 ii	600	400	250	500	310	450	310	300 X 120
M 06032 M 06032 i / M 06032 ii	650	350	240	550	260	490	250	250 X 80
M 06052 M 06052 i / M 06052 ii	650	550	210	550	460	490	430	400 X 80
M 08062 M 08062 i / M 08062 ii	800	600	200	700	500	650	480	400 X 80
M 08083 M 08083 i / M 08083 ii	800	800	300	700	700	600	680	600 X 150
M 08052 M 08052 i / M 08052 ii	850	550	280	750	460	650	450	400 X 120
M 085062 M 085062 i / M 085062 ii	850	600	200	750	500	650	480	400 X 80

* Without canopy

For any other size please call for quotation. Design details from those shown can be changed without prior notice.

Polyester Enclosure Metering Cabinet (Single/Multi Window Shutter)

Standard Features

- Viewing window with lockable shutter – for one/two/four meter.
- Ingress protection to IP66/IP65/IP55 & lower
- Weatherproof & rigid construction, suitable for outdoor use
- High impact, corrosion & temperature resistant
- Liffroff type chrome plated brass hinges
- Awning type canopy above the door
- key locks, zinc die cast & chrome plated - 2 nos
- Studs on back wall for mounting plate fixing
- Wall thickness 3 mm generally & 5 mm at stress points
- Fire retardant, self extinguishing to BS 476: Part 7: 1997 Class 2
- External finish: Plain semi gloss light grey gelcoat finish to RAL 7035
- Long life & high temperature resistant EPDM rubber door seal
- All hardware of galvanized steel or non-corrosive material

Options

- Wing type lock, with/without key
- Stainless steel hardware
- Pad locking facility
- Higher wall thickness
- Higher fire rating
- Facility to put utility authority seal
- External finish in colours as per standard chart below

Accessories

- Mounting plate
- Gland plate
- Ventilators*
- Wall mounting brackets

Standard Colours

- ◆ Light Grey - RAL 7035
- ◆ Pure White - RAL 9010
- ◆ Light Ivory - RAL 1015
- ◆ Grass Green - RAL 6010
- ◆ Flame Red - RAL 3000
- Other colours on special request

* Addition of ventilator may hamper ingress protection



MSS: Single Window



MSD: Double Window

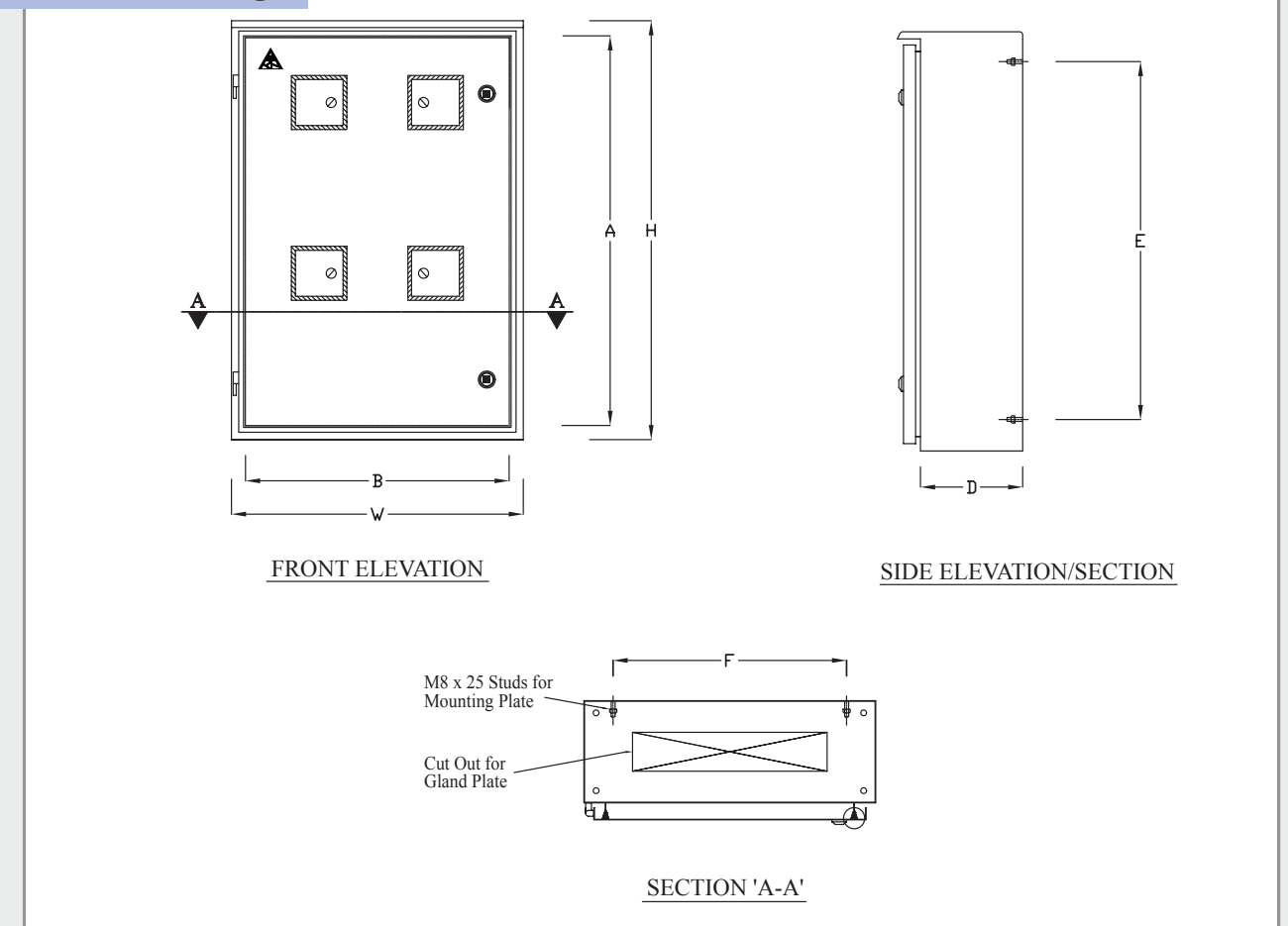


MSF: Four Window

Installation: Flush / Wall / Floor Mounting or Free Standing

Polyester Enclosure Metering Cabinet (Single/Multi Window Shutter)

General Drawing



* Window location depends on the size of the enclosure

Sizes Available

All dimensions in mm

PRODUCT REFERENCE	INTERNAL SIZE			CLEAR OPENING		C/C OF STUDS		CUT OUT FOR GLAND PLATE
	HEIGHT H	WIDTH W	DEPTH D	A	B	E	F	
MSS 04031	450	300	180	405	250	300	230	200 X 60
MSS 04042	450	400	200	350	310	300	300	300 X 80
MSS 06052	650	550	210	550	460	490	430	400 X 80
MSD 06052	650	550	210	550	460	470	430	400 X 80
MSD 085062	850	600	200	750	500	650	480	400 X 80
MSS 085062	850	600	200	750	500	650	480	400 X 80
MSF 085062	850	600	200	750	500	650	480	400 X 80

For any other size please call for quotation. Design details from those shown can be changed without prior notice.

GRP Integrated Canopy Enclosure (Single/Double Door)

Standard Features

- Ingress protection to IP66/IP65/IP55 & lower
- Weatherproof & rigid construction, suitable for outdoor use
- High impact, corrosion & temperature resistant
- Lifroff type chrome plated brass hinges
- Inbuilt canopy
- key locks, zinc die cast & chrome plated – 2 nos
- Studs on back wall for mounting plate fixing
- Wall thickness 4 mm generally & 6 mm at stress points
- Fire retardant, self extinguishing to BS 476: Part 7: 1997 Class 2
- External finish: Plain semi gloss light grey gelcoat finish to RAL 7035
- Long life & high temperature resistant EPDM rubber door seal
- All hardware of galvanized steel or non-corrosive material

Options

- Cylinder key lock with handle & dust cap
- Swing handle type locking arrangement
- Wing type lock, with/without key
- Stainless steel hardware
- Pad locking facility
- Higher wall thickness
- Higher fire rating
- Insulated construction with encapsulated PU foam
- Anti-vandal construction with encapsulated WBP plywood
- Additional internal door
- External finish in colours as per standard chart below

Accessories

- Mounting plate
- Gland plate
- Lifting hooks
- Door stays
- Drawing pocket
- Wall mounting brackets
- UV resistant transparent window
- Pedestal
- Ventilators*

Standard Colours

- ◆ Light Grey - RAL 7035
- ◆ Pure White - RAL 9010
- ◆ Light Ivory - RAL 1015
- ◆ Grass Green - RAL 6010
- ◆ Flame Red - RAL 3000
- Other colours on special request

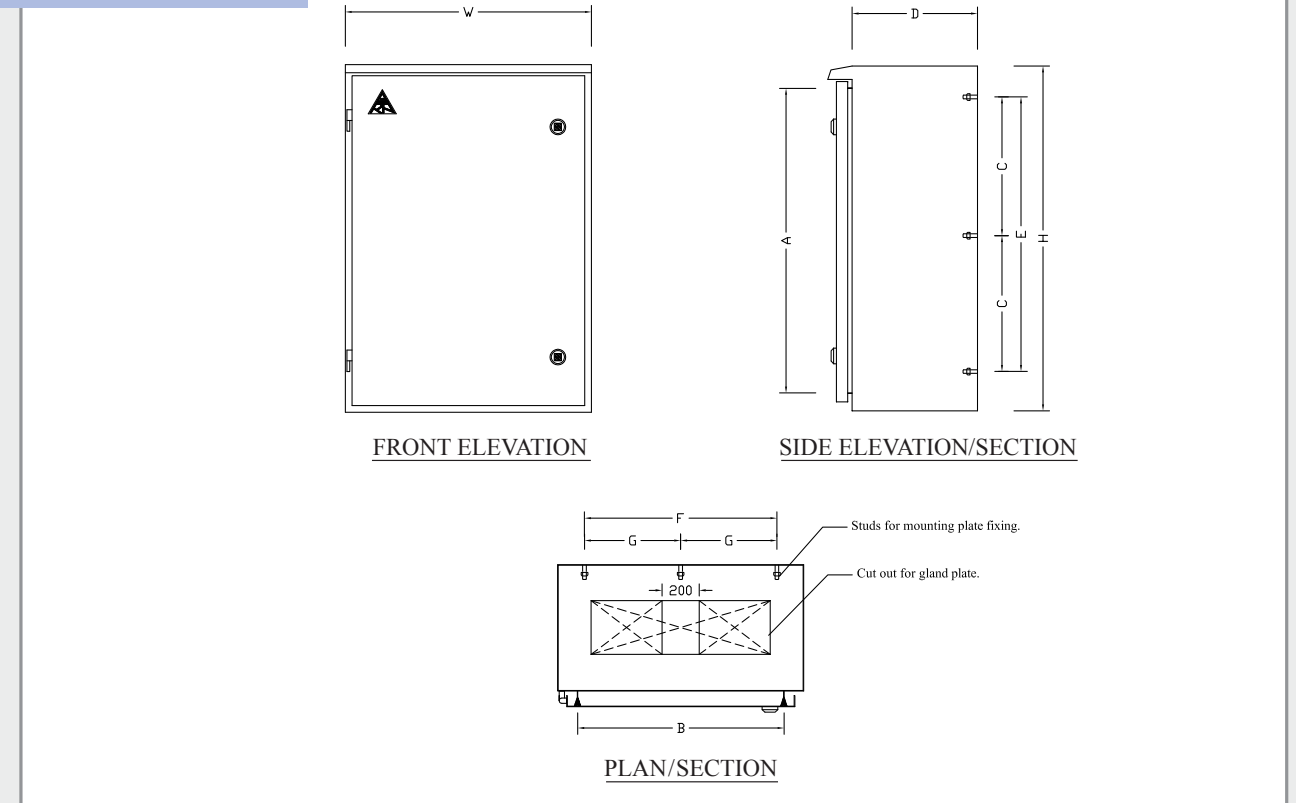
* Addition of ventilator may hamper ingress protection



Installation: Floor Mounting or Free Standing

GRP Integrated Canopy Enclosure (Single/Double Door)

General Drawing



Sizes Available

All dimensions in mm

PRODUCT REFERENCE	INTERNAL SIZE			CLEAR OPENING		C/C OF STUDS				CUT OUT FOR GLAND PLATE
	HEIGHT H	WIDTH W	DEPTH D	A	B	C	E	F	G	
MIS 05033	500	350	350	400	250	---	345	250	---	200 X 120
MIS 06063	600	600	300	500	500	---	450	480	---	350 X 120
MIS 07052	700	550	250	600	460	---	490	430	---	400 X 120
MIS 10062	1000	600	250	900	500	---	800	480	---	400 X 120
MIS 10083	1000	800	300	900	700	---	800	680	---	600 X 120
MID 12123*	1200	1200	300	1100	1100	500	---	---	525	400 X 150 X (2)
MID 16165*	1600	1650	500	1500	1550	590	---	---	725	475 X 200 X (2)

* Double Door

For any other size please call for quotation. Design details from those shown can be changed without prior notice.

Polyester Junction Box - Bolted Cover Type IP-66

Standard Features

- Ingress protection to IP66
- Weatherproof & rigid construction, suitable for outdoor use
- High impact, corrosion & temperature resistant
- Stainless steel hardware
- Studs on back wall or plywood embedding for mounting plate/rail fixing
- Wall thickness 3 mm generally & 5 mm at stress points
- Fire retardant, self extinguishing to BS 476: Part 7: 1997 Class 2
- External finish: Plain semi gloss light grey gelcoat finish to RAL 7035
- Long life & high temperature resistant EPDM rubber cover seal

Options

- Higher wall thickness
- Higher fire rating
- External finish in colours as per standard chart below

Accessories

- Mounting plate
- Gland plate
- Wall mounting brackets

Standard Colours

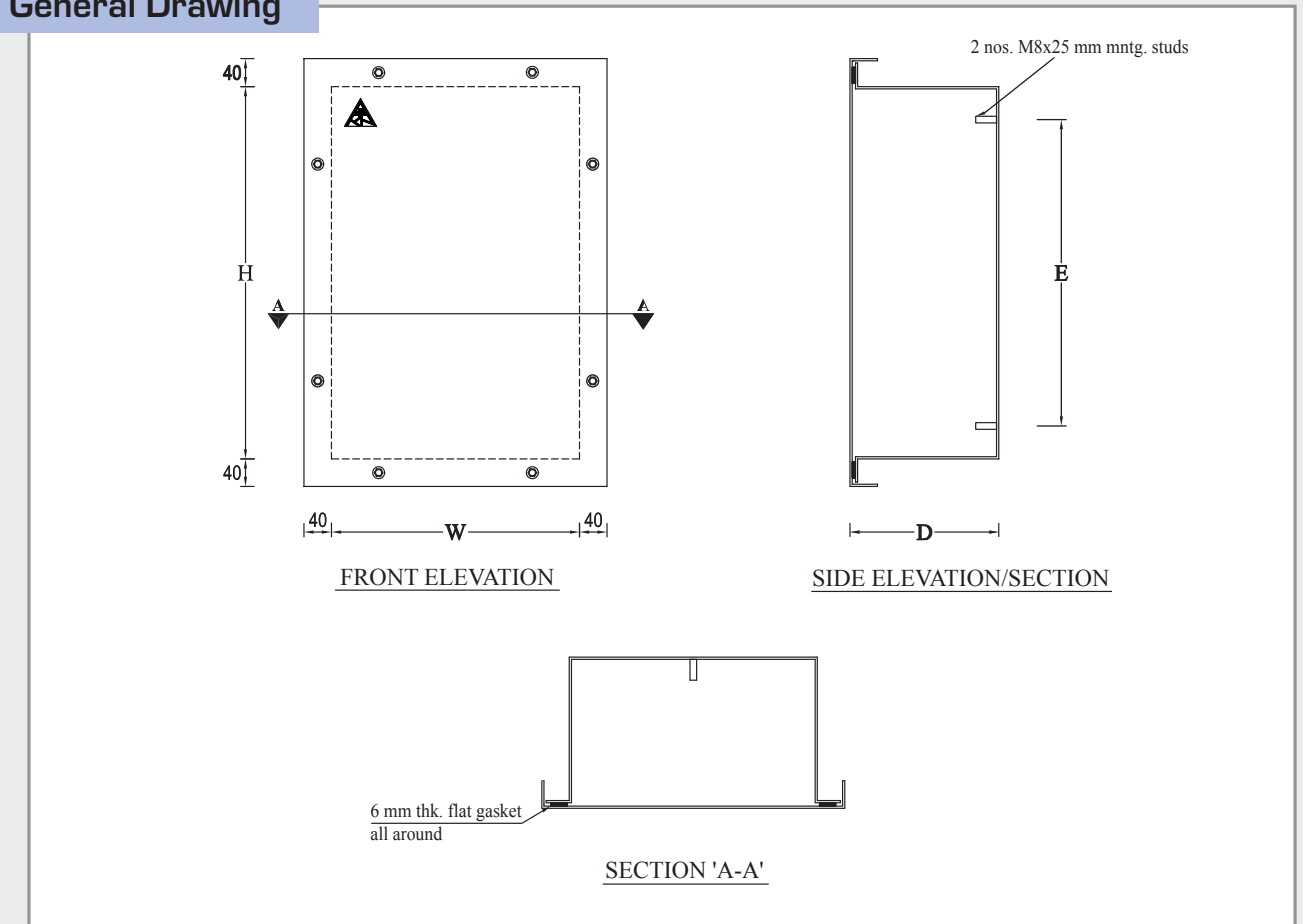
- ◆ Light Grey - RAL 7035
- ◆ Pure White - RAL 9010
- ◆ Light Ivory - RAL 1015
- ◆ Grass Green - RAL 6010
- ◆ Flame Red - RAL 3000
- Other colours on special request



Installation: Flush or Wall Mounting

Polyester Junction Box Bolted Cover Type IP-66

General Drawing



Sizes Available

All dimensions in mm

PRODUCT REFERENCE	INTERNAL SIZE		
	HEIGHT H	WIDTH W	DEPTH D
JB 101006 ii*	100	100	60
JB 121212 ii*	120	120	120
JB 202012 ii	200	200	120
JB 202020 ii	200	200	200
JB 302012 ii	300	200	120
JB 322920 ii	320	290	200
JB 453715 ii	450	370	155
JB 453018 ii	450	300	180
JB 454020 ii	450	400	200
JB 707020 ii	700	700	200

* With plywood embedding

For any other size please call for quotation. Design details from those shown can be changed without prior notice.

Polyester Telephone Box & Cable TV Box

Standard Features

- Weatherproof & rigid construction, suitable for outdoor use
- High impact, corrosion & temperature resistant
- Stainless steel hinges
- key locks, zinc die cast & chrome plated
- 4 nos. M8 nut inserts embedding for mounting plate fixing
- Wall thickness 3 mm generally
- Fire retardant, self extinguishing to BS 476: Part 7: 1997 Class 2
- External finish: Plain semi gloss light grey gelcoat finish to RAL 7035
- Foam rubber door seal
- All hardware of galvanized steel or non-corrosive material

Standard Colours

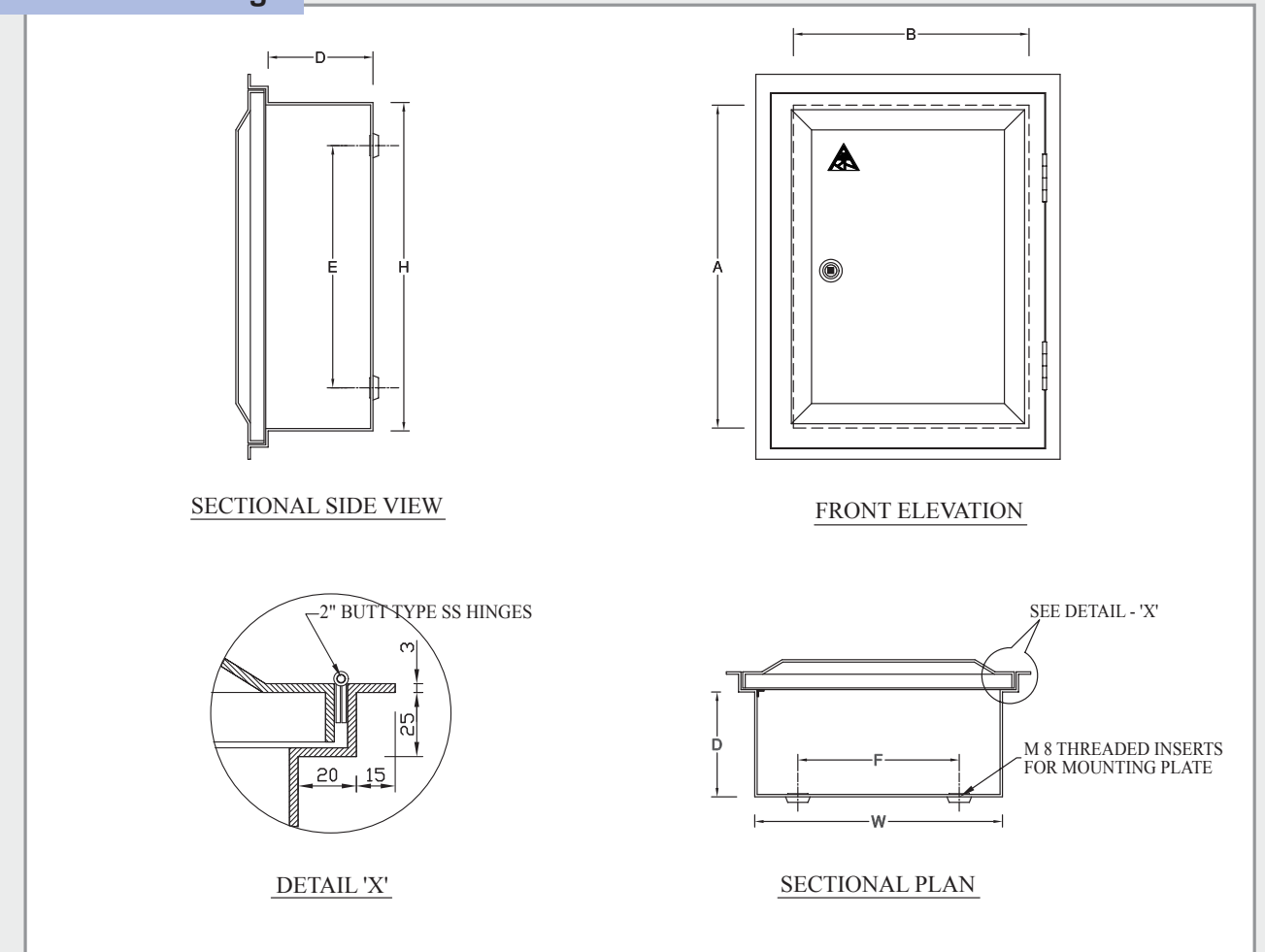
- ◆ Light Grey - RAL 7035
- Other colours on special request



Installation: Flush or Wall Mounting

Polyester Telephone Box & Cable TV Box

General Drawing



Sizes Available

All dimensions in mm

PRODUCT REFERENCE	INTERNAL SIZE			CLEAR OPENING		C/C OF INSERTS	
	HEIGHT H	WIDTH W	DEPTH D	A	B	E	F
TB 403015	400	300	150	400	280	300	200
TB 604017	600	400	170	600	370	500	300
TB 806020	800	600	200	800	560	700	500
CATV 302515	300	250	150	300	230	200	150

For any other size please call for quotation. Design details from those shown can be changed without prior notice.

Polyester Telephone Junction Box and CATV Junction Box

Standard Features

- Weatherproof & rigid construction, suitable for outdoor use
- High impact, corrosion & temperature resistant
- Stainless steel screws
- Wall thickness 3 mm generally
- Fire retardant, self extinguishing to BS 476: Part 7: 1997 Class 2
- External finish: Plain semi gloss light grey gelcoat finish to RAL 7035

Standard Colours

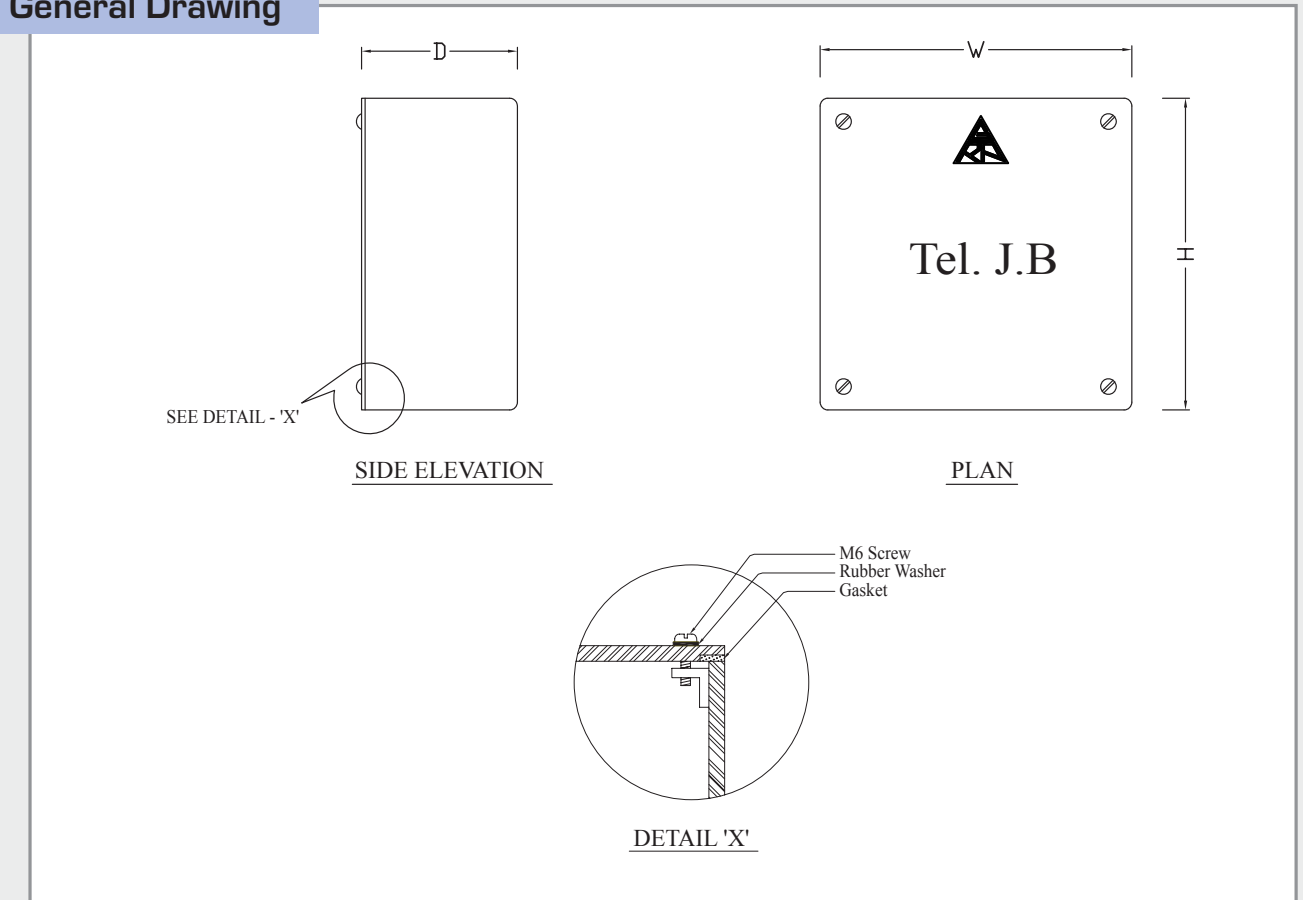
- ◆ Light Grey - RAL 7035
- Other colours on special request



Installation: Flush or Wall Mounting

Polyester Telephone Junction Box and CATV Junction Box

General Drawing



Sizes Available

All dimensions in mm

PRODUCT REFERENCE	INTERNAL SIZE		
	HEIGHT H	WIDTH W	DEPTH D
TEL JB 202010	200	200	100
CATV JB 202010	200	200	100

For any other size please call for quotation. Design details from those shown can be changed without prior notice.

Polyester Enclosure for Fire Equipment

Standard Features

- Weatherproof & rigid construction
- High impact, corrosion & temperature resistant, suitable for outdoor use
- Liftoff type chrome plated brass hinges
- Wing type lock, without key – 2 nos.
- Awning type canopy above the door or inbuilt canopy
- Wall thickness 3 mm generally & 5 mm at stress points
- Base additionally reinforced with encapsulated WBP plywood
- Fire retardant, self extinguishing to BS 476: Part 7: 1997 Class 2
- External finish: Plain semi gloss red gelcoat finish to RAL 3000
- Long life & high temperature resistant EPDM rubber door seal
- All hardware of galvanized steel or non-corrosive material

Options

- Full rain canopy
- Handle type lock or toggle latch
- Stainless steel hardware
- Higher wall thickness
- Other red colour shades are available on request (single door, double door & metering enclosures can be manufactured as per Fire/Safety specifications in all sizes)

Accessories

- Wall mounting brackets
- Mounting plate
- Ventilators
- UV resistant transparent window

Standard Colours

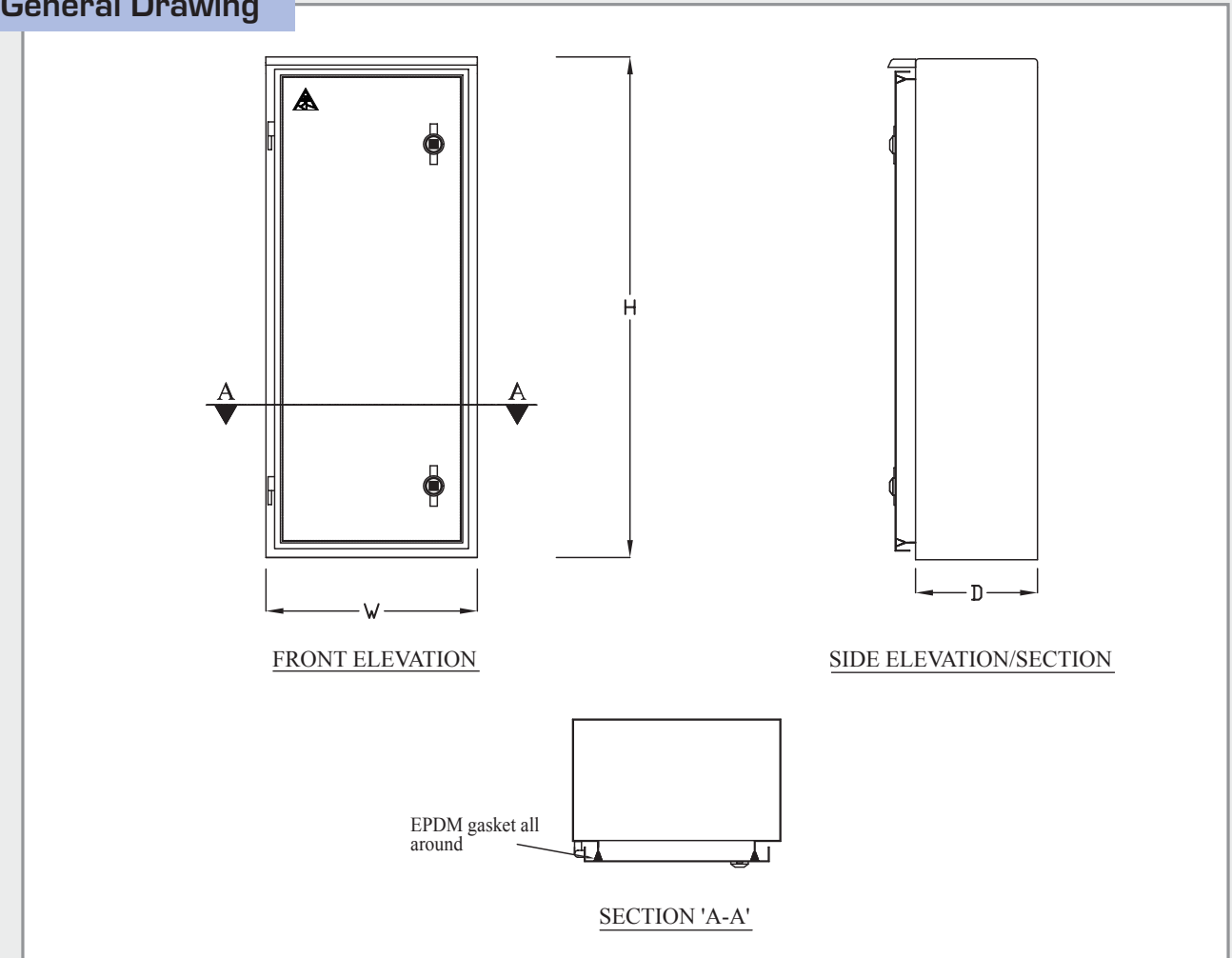
- ◆ Flame Red - RAL 3000
- Other colours on special request



Installation: Floor Mounting or Free Standing

Polyester Enclosure for Fire Equipment

General Drawing



Sizes Available

All dimensions in mm

PRODUCT REFERENCE	INTERNAL SIZE		
	HEIGHT H	WIDTH W	DEPTH D
FB 524219	520	420	190
FB 653524	650	350	240
FB 723625	720	360	250
FB 753535	750	350	350
FB 773624	775	360	240
FB 10033	1000	300	300
FB 151046	1500	1000	460

For any other size please call for quotation. Design details from those shown can be changed without prior notice.

GRP Battery Box

Standard Features

- Ingress protection up to IP66
- Weatherproof & rigid construction, suitable for outdoor use
- High impact, corrosion & temperature resistant
- Removable top cover with handle
- Locking by stainless steel toggle latches
- Base additionally reinforced with encapsulated WBP plywood
- Wall thickness 4 mm generally & 6 mm at stress points
- Fire retardant, self extinguishing to BS 476: Part 7: 1997 Class 2
- External finish: Plain semi gloss light grey gelcoat finish to RAL 7035
- Long life & high temperature resistant EPDM/neoprene rubber door seal
- All hardware of stainless steel

Options

- GRP battery rack
- Hinge type removable cover
- Higher wall thickness
- Higher fire rating
- Anti-vandal construction with encapsulated WBP plywood

Accessories

- Gland plate
- Ventilators*

Standard Colours

- ◆ Light Grey - RAL 7035
- Other colours on special request

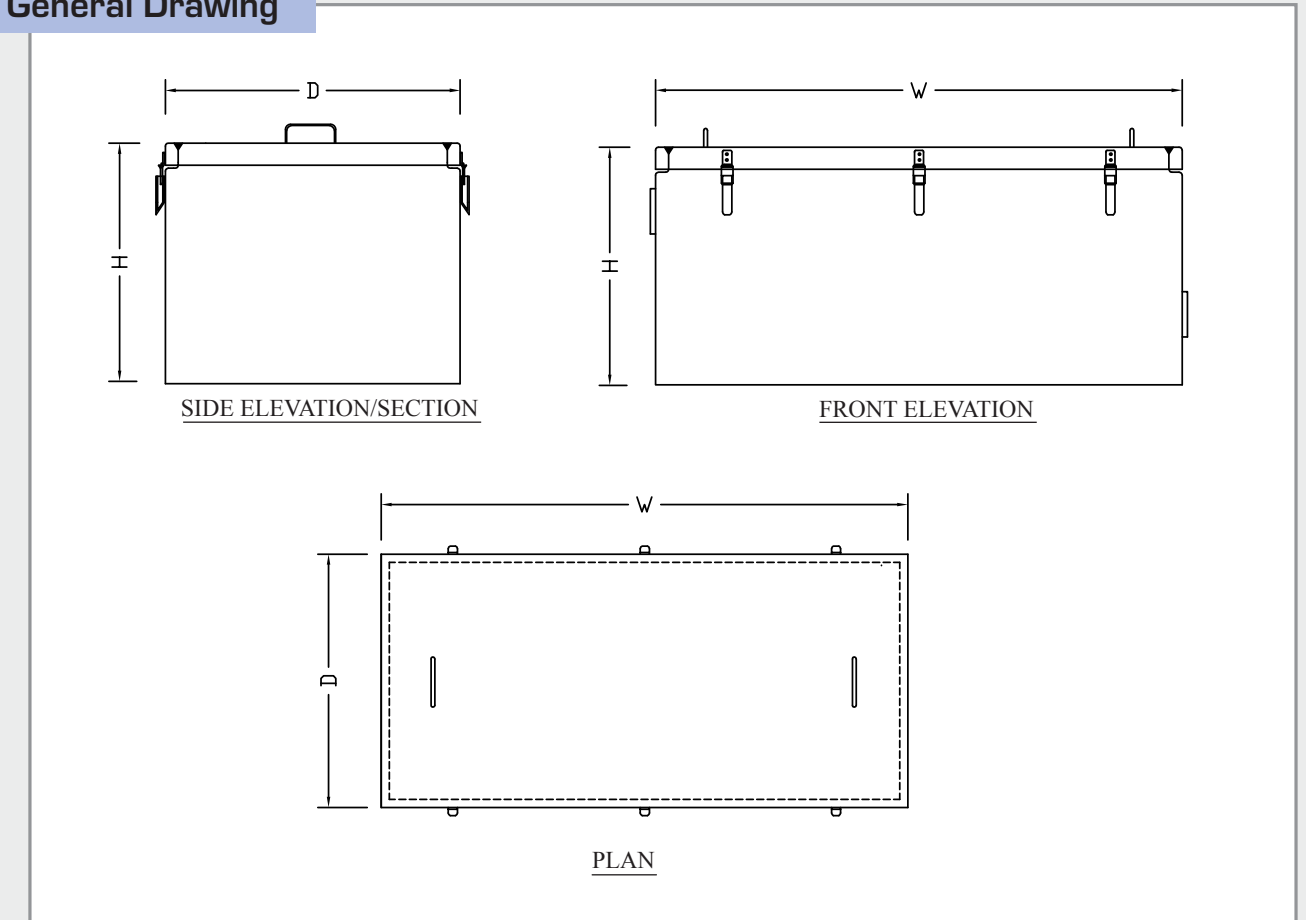
* Addition of ventilator may hamper ingress protection



Installation: Floor Mounting or Free Standing

GRP Battery Box

General Drawing



Sizes Available

All dimensions in mm

PRODUCT REFERENCE	INTERNAL SIZE		
	HEIGHT H	WIDTH W	DEPTH D
BB 060506	665	575	655
BB 100506	1000	575	655
BB 100606	1000	650	655
BB 150706	1525	775	685
BB 200506	2000	575	655

For any other size please call for quotation. Design details from those shown can be changed without prior notice.

Polyester Enclosure for Water Meter Type I

Standard Features

- Viewing window with lockable shutter
- Weatherproof & rigid construction, suitable for outdoor use
- High impact, corrosion & temperature resistant
- Butt type stainless steel hinges
- key locks, zinc die cast & chrome plated – 2 nos
- Wall thickness 3 mm generally
- Fire retardant, self extinguishing to BS 476: Part 7: 1997 Class 2
- External finish: Plain semi gloss light grey gelcoat finish to RAL 7035
- Long life flat rubber door seal
- Drain holes
- All hardware of galvanized steel or non-corrosive material

Options:

- GRP back plate
- External finish in colours as per standard chart below

Standard Colours

- ◆ Light Grey - RAL 7035
- ◆ Pure White - RAL 9010
- ◆ Light Ivory - RAL 1015
- ◆ Grass Green - RAL 6010
- Other colours on special request

PRODUCT REFERENCE	INTERNAL SIZE		
	HEIGHT H	WIDTH W	DEPTH D
WMB 602520	600	250	200
WMB 602523	600	250	230
WMB 653020	650	300	200
WMB 702525	700	250	250
WMB 707725	700	770	250
WMB 1202525	1200	250	250

For any other size please call for quotation.
Design details from those shown can be changed without prior notice.



Installation: Flush or Wall Mounting

Polyester Enclosure for Water Meter (Single/Double) Type II

Standard Features

- Viewing window with shutter - For one/two water meter.
- Weatherproof & rigid construction, suitable for outdoor use
- High impact, corrosion & temperature resistant
- Liftoff type stainless steel hinges
- Wing type lock, without key – 2 nos.
- Wall thickness 3 mm generally & 5 mm at stress points
- Fire retardant, self extinguishing to BS 476: Part 7: 1997 Class 2
- External finish: Plain semi gloss light grey gelcoat finish to RAL 7035.
- Long life & high temperature resistant EPDM rubber door seal
- Pad locking facility
- Drain & ventilation holes
- All hardware of galvanized steel or non-corrosive material

Options:

- External finish in colours as per standard chart below

Standard Colours

- ◆ Light Grey - RAL 7035
- ◆ Pure White - RAL 9010
- ◆ Light Ivory - RAL 1015
- ◆ Grass Green - RAL 6010
- Other colours on special request

PRODUCT REFERENCE	INTERNAL SIZE			CLEAR OPENING	
	HEIGHT H	WIDTH W	DEPTH D	A	B
WMS 06042	600	400	200	500	300
WMD 06052	600	500	200	500	400



Installation: Flush or Wall Mounting

GRP Enclosure for SCADA System (Type A, B & C)

Standard Features

- Weatherproof & anti-vandal rigid construction
- High impact, corrosion & temperature resistant, suitable for outdoor use
- Ingress protection to IP65
- Separate chambers for instrument & metering system with independent door
- Provision for battery area in instrument chamber
- Full rain canopy
- Liftoff type stainless steel hinges
- Heavy duty handle type 3 point locking arrangement
- Construction with encapsulated WBP plywood
- Fire retardant, self extinguishing to BS 476: Part 7: 1997 Class 2
- External finish: Plain semi gloss white gelcoat finish to RAL 9010
- Long life & high temperature resistant EPDM rubber door seal
- Pad locking facility
- All hardware of stainless steel

Accessories

- Mounting plate
- Gland plate
- Door stays
- Lifting hooks
- Vent cover/shield

Standard Colours

- ◆ Pure White - RAL 9010
- Other colours on special request



Type A



Type B



Type C

GRP Bulk & Area Metering Enclosure

Standard Features

- Weatherproof & anti-vandal rigid construction
- High impact, corrosion & temperature resistant, suitable for outdoor use
- Ingress protection to IP65
- Separate dry & wet chambers with independent door
- Meter viewing window with lockable shutter
- Full rain canopy
- Liftoff type stainless steel hinges
- Heavy duty handle type 3 point locking arrangement
- Construction with encapsulated WBP plywood
- Fire retardant, self extinguishing to BS 476: Part 7: 1997 Class 2
- External finish: Plain semi gloss grey gelcoat finish to RAL 7032
- Long life & high temperature resistant EPDM rubber door seal
- Pad locking facility
- All hardware of stainless steel

Accessories

- Mounting plate
- Gland plate
- Door stays
- Lifting hooks

Standard Colours

- ◆ Grey - RAL 7032
- Other colours on special request



GRP Instrument Enclosure (Single/Double Instrument)

Standard Features

- Weatherproof & rigid construction, suitable for outdoor use
- High impact, corrosion & temperature resistant
- Suitable for pipe mounting
- Ingress protection to IP65 & lower
- Wall thickness 4 mm generally
- Non-absorbent to hydrocarbons
- Anti-static
- Good thermal insulation
- Locking by stainless steel toggle latch
- Fire retardant, self extinguishing to BS 476: Part 7: 1997 Class 2
- External finish: Plain semi gloss gelcoat finish, light grey RAL 7035/white RAL 9010
- Long life & high temperature resistant EPDM/Neoprene rubber door seal

Options:

- Higher/lower wall thickness
- Viewing window
- Customizable fixing arrangement

Accessories:

- SS 316 socket plate suitable for 2" NB pipe mounting

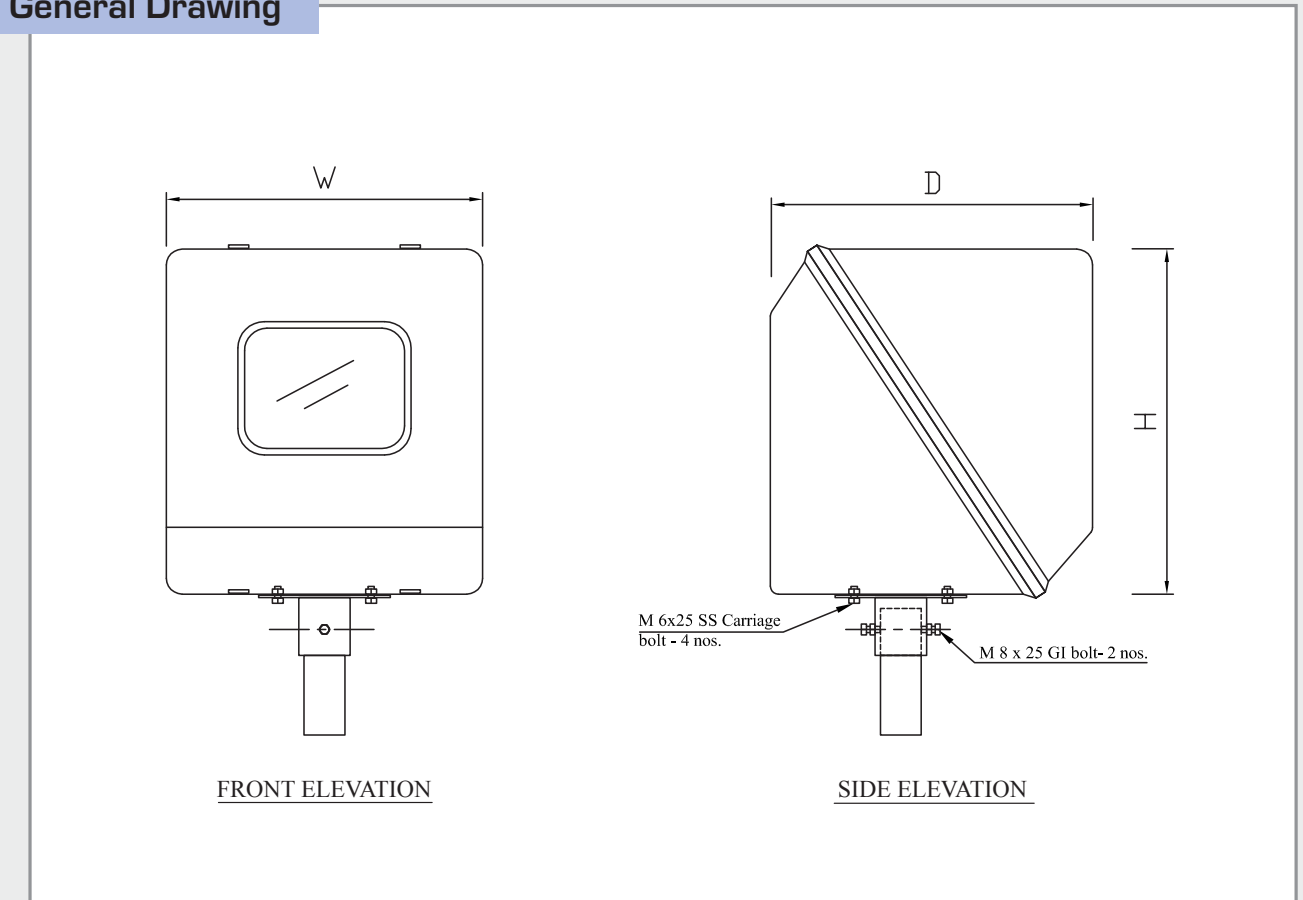
Standard Colours

- ◆ Light Grey - RAL 7035
- ◆ Pure White - RAL 9010
- Other colours on special request



GRP Instrument Enclosure (Single/Double Instrument)

General Drawing



Sizes Available

All dimensions in mm

PRODUCT REFERENCE	INTERNAL SIZE		
	HEIGHT H	WIDTH W	DEPTH D
IE 334043	330	400	430

For any other size please call for quotation. Design details from those shown can be changed without prior notice.

GRP Polyshade for (Single/Double) Instrument

Standard Features

- Weatherproof & rigid construction, suitable for outdoor use
- High impact, corrosion & temperature resistant
- Suitable for pipe mounting
- Wall thickness 4 mm generally
- Non-absorbent to hydrocarbons
- Anti-static
- Good thermal insulation
- Fire retardant, self extinguishing to BS 476: Part 7: 1997 Class 2
- External finish: Plain semi gloss gelcoat finish, light grey RAL 7035/white RAL 9010

Options

- Higher/lower wall thickness
- Customizable fixing arrangement

Accessories

- SS 316 U-bolts/clamp set with back plate suitable for 2" NB pipe mounting

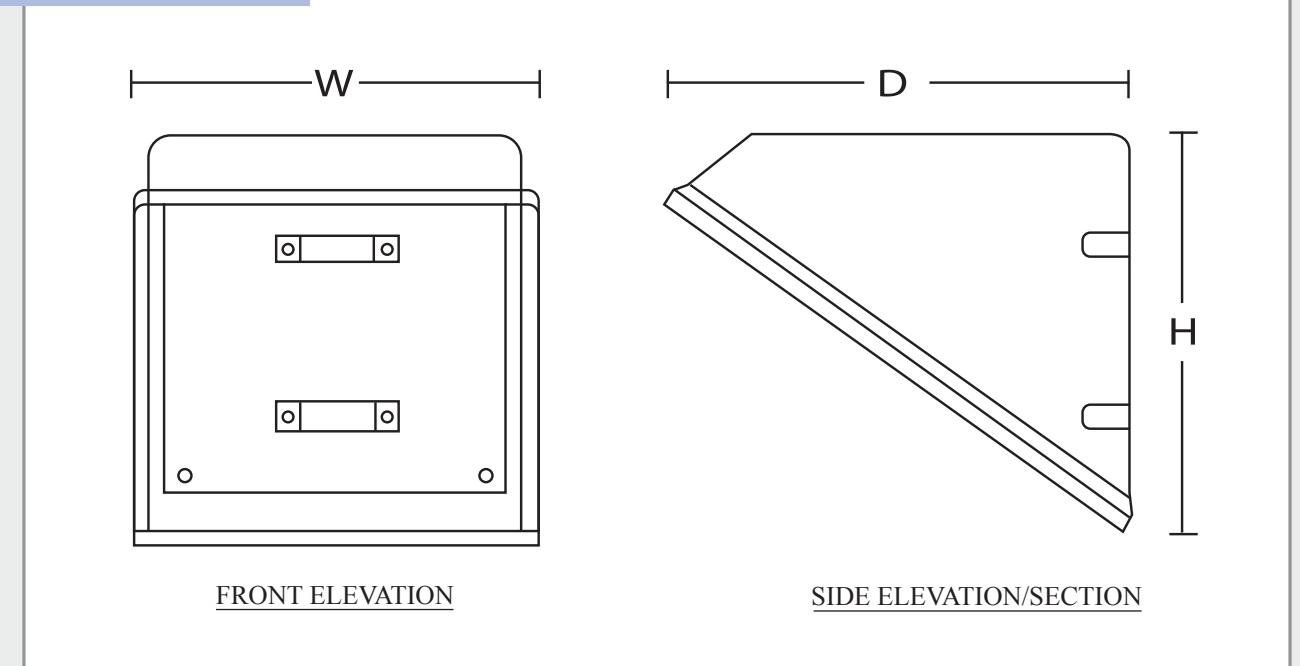
Standard Colours

- ◆ Light Grey - RAL 7035
- ◆ Pure White - RAL 9010
- Other colours on special request



GRP Polyshade for (Single/Double) Instrument

General Drawing



Sizes Available

All dimensions in mm

PRODUCT REFERENCE	HEIGHT H	WIDTH W	DEPTH D	NO. OF CLAMPS
P 183012	120	180	300	1
P 193833	330	190	380	2
P 233018	180	230	300	1
P 252631	315	250	260	2
P 252710	100	250	275	1
P 262524	240	265	250	2
P 303025	250	300	300	2
P 324237	370	320	420	2
P 364237	370	360	420	2
P 363012	120	360	300	2
P 404532	320	400	450	2
P 446944	440	440	690	2
P 454527	275	450	450	2
P 503025	250	500	300	2
P 566847	470	560	680	2
P 874245	450	875	425	4

For any other size please call for quotation. Design details from those shown can be changed without prior notice.

GRP Kiosks for Package Sub-Stations

GRP drop over kiosks/housings are of modular construction and can be assembled on site or transported & installed in fully assembled state. The kiosks/housings can be made to suit customer requirements & specifications and access doors can be provided on any side.

Standard Features

- Free standing, rigid construction, drop-over type, suitable for fixing on concrete foundation
- High impact, corrosion & temperature resistant, suitable for outdoor use
- Modular design, panels are stiffened with GRP cross members
- Double leaf access door in front & back
- Heavy duty stainless steel hinges
- Wall thickness 6 mm generally & 9 mm at stress points
- Handle type locking arrangement
- Fire retardant, self extinguishing to BS 476: Part 7: 1997 Class 2
- External finish: Plain semi gloss light grey gelcoat finish to RAL 7035.
- Aluminium aldrop for padlocking & aluminium handle on door
- Wind stay on each door
- Lifting hooks
- Natural ventilation by aluminium louvers with backup insect mesh
- All hardware of galvanized steel or non-corrosive material

Options

- Stainless steel hardware & accessories
- Higher wall thickness
- Higher fire rating
- Brackets for fixing kiosk from outside
- Ventilation system to customer's requirement & specification
- Access door for generator cable
- External finish in colours as per standard chart below

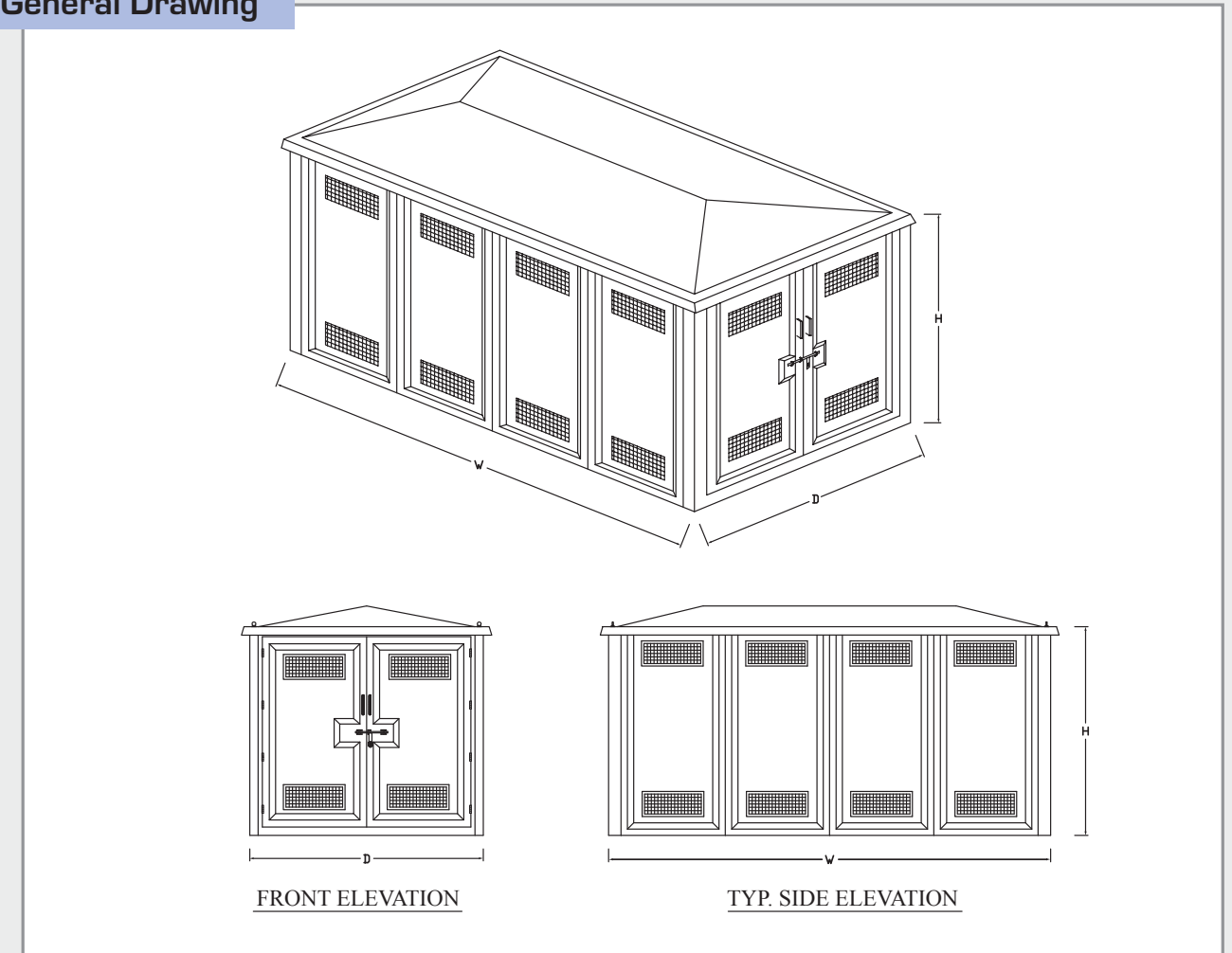
Standard Colours

- ◆ Light Grey - RAL 7035
- ◆ Pure White - RAL 9010
- ◆ Light Ivory - RAL 1015
- ◆ Grass Green - RAL 6010
- Other colours on special request



GRP Kiosks for Package Sub-Stations

General Drawing



Sizes Available

All dimensions in mm

PRODUCT REFERENCE	INTERNAL SIZE		
	HEIGHT H	WIDTH W	DEPTH D
K 253221	2500	3200	2100
K 253327	2500	3300	2700
K 223724	2200	3700	2400
K 254021	2500	4000	2100
K 304142	3000	4100	4200
K 305556	3000	5500	5600
K 255227	2500	5200	2700

For any other size please call for quotation. Design details from those shown can be changed without prior notice.

GRP Kiosks for Capacitor Banks

GRP drop over kiosks/housings are of modular construction and can be assembled on site or transported & installed in fully assembled state. The kiosks/housings can be made to suit customer requirements & specifications and access doors can be provided on any side.

Standard Features

- Free standing, rigid construction, drop-over type, suitable for fixing on concrete foundation
- High impact, corrosion & temperature resistant, suitable for outdoor use
- Modular design, panels are stiffened with GRP cross members
- Access door in front only
- Heavy duty stainless steel hinges
- Wall thickness 6 mm generally & 9 mm at stress points
- Handle type locking arrangement
- Fire retardant, self extinguishing to BS 476: Part 7: 1997 Class 2
- External finish: Plain semi gloss light grey gelcoat finish to RAL 7035
- Windstay on each door
- Lifting hooks
- Natural ventilation by aluminium louvers with backup insect mesh
- All hardware of stainless steel or non-magnetic material

Options

- Higher wall thickness
- Higher fire rating
- Brackets for fixing kiosk from outside
- Ventilation system to customer's requirement & specification
- Access door for generator cable
- External finish in colours as per standard chart below

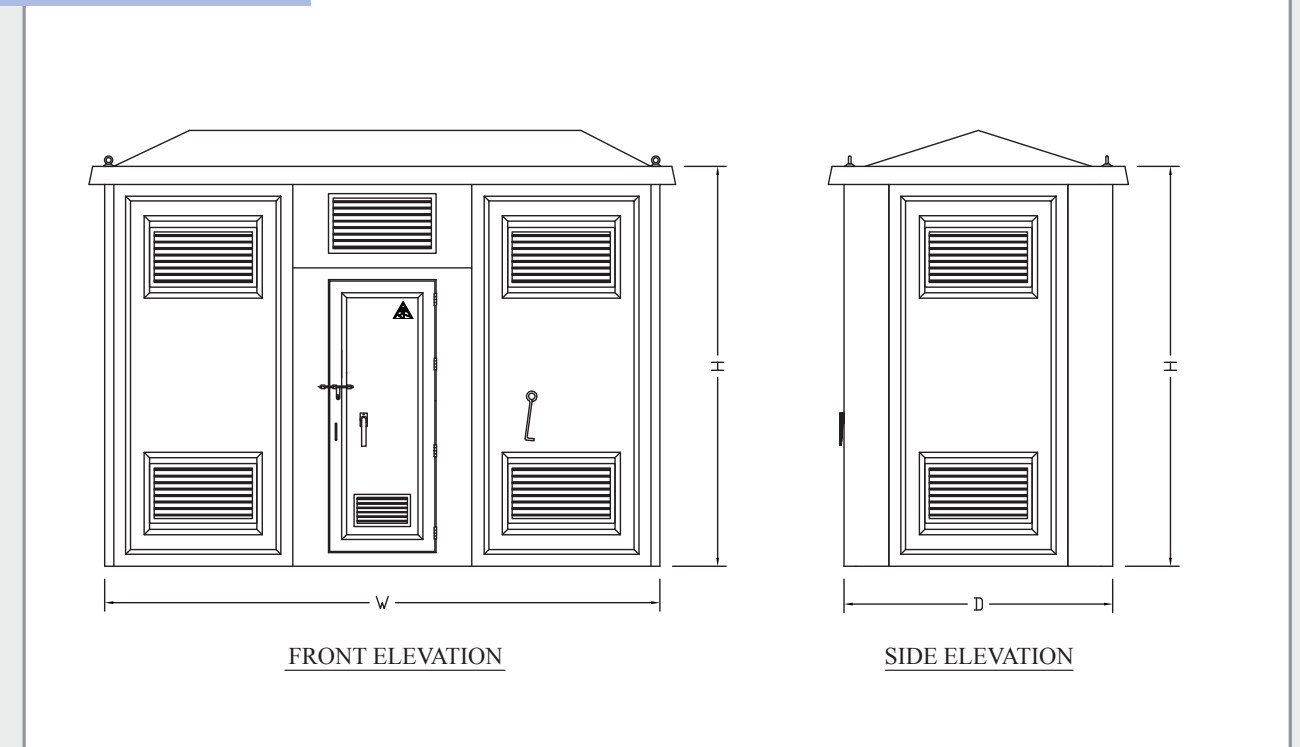
Standard Colours

- ◆ Light Grey - RAL 7035
- ◆ Pure White - RAL 9010
- ◆ Light Ivory - RAL 1015
- ◆ Grass Green - RAL 6010
- Other colours on special request



GRP Kiosks for Capacitor Banks

General Drawing



Sizes Available

All dimensions in mm

PRODUCT REFERENCE	INTERNAL SIZE		
	HEIGHT H	WIDTH W	DEPTH D
KC 344622	3450	4650	2250
KC 344637	3450	4650	3750
KC 364622	3600	4650	2250
KC 366122	3600	6165	2250
KC 462222	4650	2200	2200

For any other size please call for quotation. Design details from those shown can be changed without prior notice.

GRP Kiosks Ingress Protection up to IP-55

GRP drop over kiosks/housings are of modular construction and can be assembled on site or transported & installed in fully assembled state. The kiosks/housings can be made to suit customer requirements & specifications and access doors can be provided on any side.

Standard Features

- Weatherproof & rigid construction
- High impact, corrosion & temperature resistant, suitable for outdoor use
- Free standing, drop-over type, suitable for fixing on concrete foundation
- Modular design, panels are stiffened with encapsulated WBP plywood
- Access door in front
- Ingress protection to IP55
- Wall thickness 6 mm generally & 9 mm at stress points
- Insulated construction with encapsulated PU foam
- Heavy duty stainless steel hinges
- Heavy duty handle type 3 point locking arrangement
- Fire retardant, self extinguishing to BS 476: Part 7: 1997 Class 2
- External finish: Plain semi gloss light grey gelcoat finish to RAL 7035
- Wind stay on each door
- Lifting hooks
- Interior lighting with door operated limit switch
- Provision to mount/fix- AC unit, anti-condensation heater, junction box, smoke detector, beacon, fire-extinguisher, fire alarm etc.
- All hardware of stainless steel

Options

- Single skin construction
- Anti-vandal construction with encapsulated WBP plywood
- Higher wall thickness
- Higher fire rating
- Access door for generator cable
- External finish in colours as per standard chart below

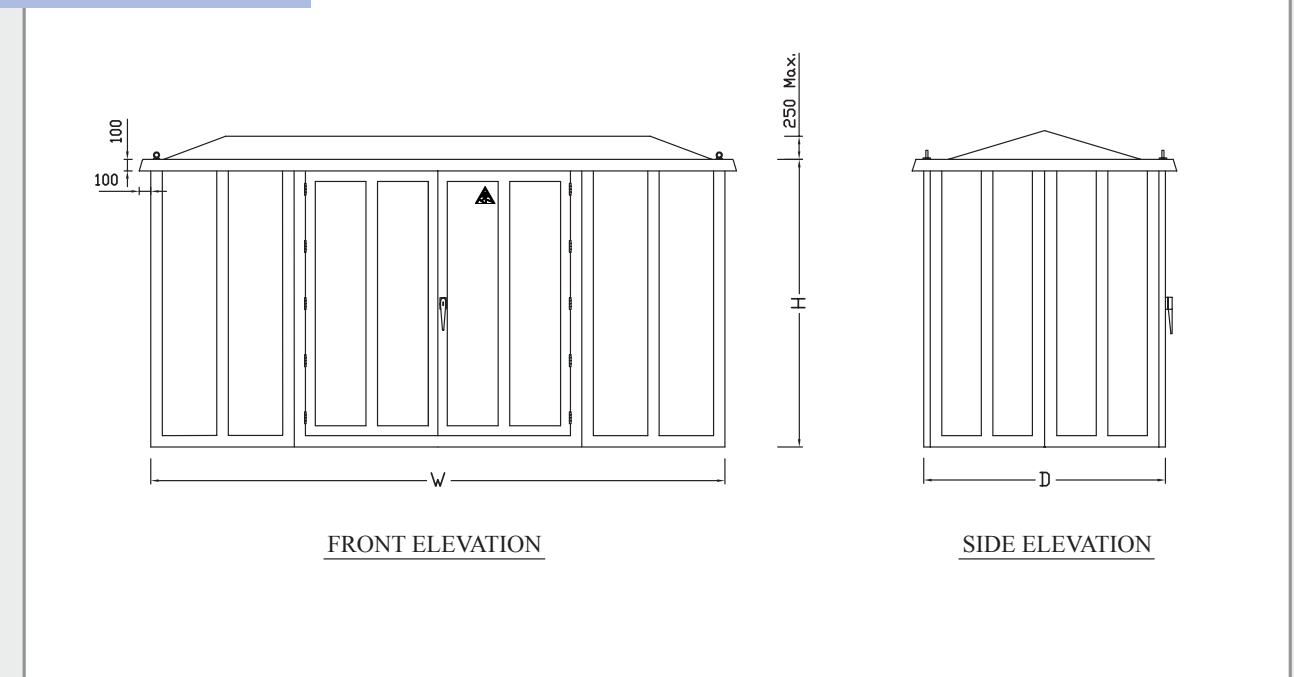
Standard Colours

- ◆ Light Grey - RAL 7035
- ◆ Pure White - RAL 9010
- ◆ Light Ivory - RAL 1015
- ◆ Grass Green - RAL 6010
- Other colours on special request



GRP Kiosks Ingress Protection up to IP-55

General Drawing



Sizes Available

All dimensions in mm

PRODUCT REFERENCE	INTERNAL SIZE		
	HEIGHT H	WIDTH W	DEPTH D
KS 201009	2000	1000	900
KS 201805	2000	1800	500
KS 201909	2000	1900	950
KS 251009	2500	1000	900
KS 251909	2500	1900	950
KS 252414	2500	2400	1450
KS 252919	2500	2900	1950
KS 253414	2500	3400	1450
KS 253924	2500	3900	2450
KS 254919	2500	4900	1950

For any other size please call for quotation. Design details from those shown can be changed without prior notice.

GRP Shelters

Standard Features

- Weatherproof & rigid construction
- High impact, corrosion & temperature resistant, suitable for outdoor use
- Free standing, suitable for fixing on skid/concrete foundation
- Access door with safety glass, anti-panic bar & self-locking
- Wall thickness 6 mm generally & 9 mm at stress points
- Insulated wall & roof construction with encapsulated PU foam
- Floor construction with encapsulated WBP plywood
- Heavy duty stainless steel hinges
- Fire retardant, self extinguishing to BS 476: Part 7: 1997 Class 2
- External finish: Plain semi gloss light grey gelcoat finish to RAL 7035
- Lifting arrangement
- Provision to mount/fix- AC unit, anti-condensation heater, junction box, smoke detector, beacon, fire-extinguisher, fire alarm etc.
- All hardware of stainless steel

Options

- Air lock chamber
- Higher wall thickness
- Additional canopy on roof
- Higher fire rating
- External finish in colours as per standard chart below

Standard Colours

- ◆ Light Grey - RAL 7035
- ◆ Pure White - RAL 9010
- ◆ Light Ivory - RAL 1015
- ◆ Grass Green - RAL 6010
- Other colours on special request



GRP Shelters



* Equipment displayed in photographs is not included

DEWA Approved Enclosures

Following are the approved enclosures manufactured for Dubai Electricity & Water Authority

SCADA System Enclosure - Type A, B & C

Standard Features

- Weatherproof & anti-vandal rigid construction
- High impact, corrosion & temperature resistant, suitable for outdoor use
- Ingress protection to IP65
- Separate chambers for instrument & metering system with independent door
- Provision for battery area in instrument chamber
- Full rain canopy
- Liftoff type stainless steel hinges
- Heavy duty handle type 3 point locking arrangement
- Construction with encapsulated WBP plywood
- Fire retardant, self extinguishing to BS 476: Part 7: 1997 Class 2
- External finish: Plain semi gloss white gelcoat finish to RAL 9010
- Long life & high temperature resistant EPDM rubber door seal
- Pad locking facility
- All hardware of stainless steel



DEWA Approved Enclosures

Water Meter Cabinet - Single & Double Meter

Standard Features

- Viewing window with shutter - for one/two water meter
- Weatherproof & rigid construction, suitable for outdoor use
- High impact, corrosion & temperature resistant
- Liftoff type stainless steel hinges
- Wing type lock, without key – 2 nos.
- Wall thickness 3 mm generally & 5 mm at stress points
- Fire retardant, self extinguishing to BS 476: Part 7: 1997 Class 2
- External finish: Plain semi gloss light grey gelcoat finish to RAL 7035
- Long life & high temperature resistant EPDM rubber door seal
- Pad locking facility
- Drain & ventilation holes
- All hardware of galvanized steel or non-corrosive material



Energy Meter Cabinet

Standard Features

- Weatherproof & rigid construction, suitable for outdoor use
- Viewing window with shutter
- Ingress protection to IP55
- GRP gland box at bottom
- High impact, corrosion & temperature resistant
- Liftoff type chrome plated brass hinges
- Awning type canopy above the door
- □ key locks, zinc die cast & chrome plated – 2 nos
- Studs on back wall for mounting plate fixing
- Wall thickness 3 mm generally & 5 mm at stress points
- Fire retardant, self extinguishing to BS 476: Part 7: 1997 Class 2
- External finish: Plain semi gloss light grey gelcoat finish to RAL 7035
- Long life & high temperature resistant EPDM rubber door seal
- All hardware of galvanized steel or non-corrosive material



ADDC/AADC Approved Enclosures

Following are the approved enclosures manufactured for Abu Dhabi/AI Ain Distribution Company

Bulk, Area Metering & DMA Enclosure

Standard Features

- Weatherproof & anti-vandal rigid construction
- High impact, corrosion & temperature resistant, suitable for outdoor use
- Ingress protection to IP65
- Separate dry & wet chambers with independent door
- Meter viewing window with lockable shutter
- Full rain canopy
- Liftoff type stainless steel hinges
- Heavy duty handle type 3 point locking arrangement
- Construction with encapsulated WBP plywood
- Fire retardant, self extinguishing to BS 476: Part 7: 1997 Class 2
- External finish: Plain semi gloss grey gelcoat finish to RAL 7032
- Long life & high temperature resistant EPDM rubber door seal
- Pad locking facility
- All hardware of stainless steel

ADDC/AADC Approved Enclosures

Energy Meter Cabinet

Standard Features

- Weatherproof & rigid construction, suitable for outdoor use
- Viewing window with shutter
- Ingress protection to IP55
- GRP gland box at bottom
- High impact, corrosion & temperature resistant
- Liftoff type chrome plated brass hinges
- Awning type canopy above the door
- key locks, zinc die cast & chrome plated – 2 nos
- Studs on back wall for mounting plate fixing
- Wall thickness 3 mm generally & 5 mm at stress points
- Fire retardant, self extinguishing to BS 476: Part 7: 1997 Class 2
- External finish: Plain semi gloss light grey gelcoat finish to RAL 7035
- Long life & high temperature resistant EPDM rubber door seal
- All hardware of galvanized steel or non-corrosive material

Street Light Control Cabinet (SLCC)

Standard Features

- Weatherproof & rigid construction, suitable for outdoor use
- High impact, corrosion & temperature resistant
- Liftoff type stainless steel hinges
- Full rain canopy
- Studs on back wall, all nut/bolts of stainless steel
- Wall thickness 4.5 mm generally & 6 mm at stress points
- Handle type 3 point locking arrangement, key no. FT333
- Glass window for photocell
- Fire retardant, self extinguishing to BS 476: Part 7: 1997 Class 2
- External finish: Plain semi gloss light grey gelcoat finish to RAL 7035
- Long life & high temperature resistant EPDM rubber door seal
- Stainless steel pad locking facility
- All hardware of galvanized steel or non-corrosive material

Water Meter Cabinet

Standard Features

- Viewing window with lockable shutter
- Weatherproof & rigid construction, suitable for outdoor use
- High impact, corrosion & temperature resistant
- Butt type stainless steel hinges
- key locks, zinc die cast & chrome plated – 2 nos
- Wall thickness 3 mm generally
- Fire retardant, self extinguishing to BS 476: Part 7: 1997 Class 2
- External finish: Plain semi gloss light grey gelcoat finish to RAL 7035
- Long life flat rubber door seal
- Drain holes
- All hardware of galvanized steel or non-corrosive material

Custom Manufactured Products



- Modular design
- Extended canopy & glass window



- Insulated construction with encapsulated PU foam
- Special door arrangement



- Drop over design
- Single chamber with multi doors in front & back



- Drop over design
- Sand trap louver with removable canopy



- Double door cabinet
- Full glass window on each door



- Single door cabinet with glass window
- With GRP plinth



- Instrument sunshade for vertical instrument installation
- Provision to see instrument display from top

Custom Manufactured Products



- Drop over design
- Single chamber with multi doors in front with window



- Cabinet to cover existing panel on wall
- Gland plate on top



- Cabinet to house fire extinguisher
- With label in English & Arabic



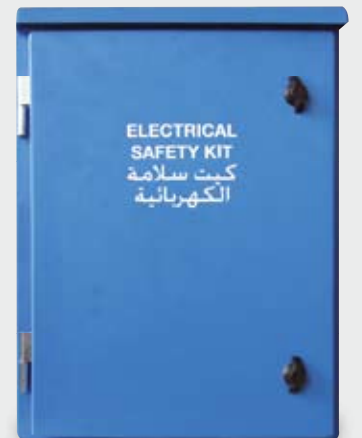
- Instrument sunshade for multi-instrument installation



- Single chamber cabinet with multi (horizontal & vertical) doors
- With GRP plinth



- Cabinet with additional internal door
- Extended door with full glass window



- Cabinet to house safety gears
- With label in English & Arabic

Project Supply Record

Project Supply Record

SR. No.	CLIENT	YEAR SUPPLIED	REMARKS
1	Dubai Electricity Company	1989	Contract LC/322/88
2	Dubai Electricity Company	1990	Contract LC/378 A/88
3	Dubai Electricity Company	1990	LVAC Boards
4	Dubai Municipality	1990	Street Lighting Cabinets
5	Dubai Electricity Company	1991	Contract LC/360 A/89
6	Dubai Electricity Company	1992	Contract LC/203/A/91
7	Dubai Electricity Company	1992	Contract LC/293/91
8	Water & Electricity Department (WED), Abu Dhabi	1993	For WED Contract
9	Dubai Electricity & Water Authority (DEWA)	1993	Contract LC/038 A/92
10	Dubai Municipality	1993	Sewage Pumping Station at Dubai World Trade Centre
11	Dubai Electricity & Water Authority (DEWA)	1993	DEWA Tender No. CE/066A/96
12	Dubai Electricity & Water Authority (DEWA)	1994	Contract LC/091/93
13	Dubai Electricity & Water Authority (DEWA)	1994	Feeder Pillars
14	Dubai Electricity & Water Authority (DEWA)	1995	Metering Cabinets
15	Abu Dhabi Distribution Company (ADDC)	1995	Street Lighting Cabinets
16	Abu Dhabi Distribution Company (ADDC)	1995	Metering Cabinets
17	Dubai Electricity & Water Authority (DEWA)	1995	DEWA Contract CE/217B/94
18	Federal Electricity & Water Authority (FEWA), Dubai	1995	Feeder Pillars Type A, Type B & Type C, Service Pillars
19	Dubai Electricity & Water Authority (DEWA)	1995	Package Substations
20	RAK Properties, Ras Al Khaimah, UAE	1995	Project: Mina Al Arab Phase - 1 Foul Water Pump Station
21	Dubai Municipality	1996	Sewage Pumping Station at Shaikh Zayed Road, Dubai
22	Water & Electricity Department (WED), Abu Dhabi	1997	Energy Meter Connection Works
23	Department of Civil Aviation (DCA), Dubai	1997	Dubai International Airport Contract TD-62
24	Abu Dhabi Municipality	1997	Contract 950, Sector Road Works
25	Dubai Municipality	1998	Irrigation Control Panel at Al Qudra Road, Dubai Airport Free Zone
26	Ministry of Electricity & Water (MEW), Dubai	1998	MEW Tender No. 100 EM/97
27	Abu Dhabi Water & Electricity Authority (ADWEA)	1999	Package Substations
28	Department of Civil Aviation (DCA), Dubai	1999	Dubai International Airport Contract TD-82
29	Electricity Department, Doha	1999	Feeder Pillars
30	Abu Dhabi Municipality	2000	ADSS Contract 304 Mafraq, Abu Dhabi
31	Public Works Department (PWD), Abu Dhabi	2000	For Al Ain Sports Club
32	National Petroleum Construction Company (NPCC)	2000	NPCC Relocation at Abu Dhabi



Saudi Arabia • United Arab Emirates
Qatar • Oman • Bahrain • Iraq
Kuwait • Yemen • Jordan • Iran
United Kingdom • Hungary • Turkey
Kazakhstan • Turkmenistan • Pakistan
Bangladesh • Afghanistan • Sri Lanka
Egypt • Algeria • Libya • Sudan

SR. No.	CLIENT	YEAR SUPPLIED	REMARKS
33	Ministry of Electricity, Oman	2000	Feeder Pillars
34	Abu Dhabi Distribution Company (ADDC)	2000	Package Substations
35	Borouge Petrochemical, Abu Dhabi	2001	Borouge 1 Project
36	Abu Dhabi Municipality	2001	Project: 200 Villas at Al Samha East
37	Abu Dhabi Distribution Company (ADDC)	2001	Low Cost Houses at Khalifa City B, Abu Dhabi
38	Department of Civil Aviation (DCA), Dubai	2001	Dubai International Airport Contract TD-82, North Runway Taxi System
39	Department of Civil Aviation (DCA), Dubai	2002	Project AX - 025, Dubai International Airport
40	Abu Dhabi Gas Industries Limited (GASCO)	2003	Buhasa Project
41	Department of Civil Aviation (DCA), Dubai	2003	Project AX - 092, Dubai International Airport
42	Al Ain Distribution Company (AADC)	2003	Street Lighting Cabinets in Al Ain
43	Abu Dhabi Municipality	2004	Project 113 Irrigation Distribution Network (Lot A)
44	Department of Civil Aviation (DCA), Dubai	2004	Project AX - 096, Dubai International Airport
45	Dubai Petroleum Corporation (DPC)	2005	Instrument Sunshades for FTH/SWF Field
46	Dubai Silicon Oasis Authority	2005	Street Lighting Cabinets at Dubai Silicon Oasis
47	Department of Civil Aviation (DCA), Dubai	2005	Project AX - 252, Dubai International Airport
48	Dubai Silicon Oasis Authority	2006	Feeder Pillar at Dubai Silicon Oasis
49	Sharjah Electricity & Water Authority (SEWA)	2006	Package Substation at Kalba, Sharjah
50	Abu Dhabi Company for Onshore Oil Operations (ADCO)	2006	Construction of New Clusters/Service Building at ASAB
51	Dubai Aluminium (DUBAL)	2006	Dubai Expansion Project
52	Abu Dhabi Gas Industries Limited (GASCO)	2006	BAB & ASAB Project
53	Dubai Properties	2006	Jumeirah Beach Residence District Cooling Plant
54	Qatar Gas	2006	Instrument Sunshades
55	Petroleum Development Oman (PDO)	2006	Kauther Gas Plant by Petrofac
56	Dubai Municipality	2006	Irrigation Control Panel at Dubai Silicon Oasis
57	Dubai Municipality	2006	Irrigation Control Panel at Zabeel Park, Dubai
58	Department of Civil Aviation, Dubai	2007	DWC Airport, Project - JXB1/NF/INF/010" Jebel Ali Airport City
59	Abu Dhabi Sewerage Services Company (ADSSC)	2007	ADSSC Contract 452, Sewage Work at Baniyas & Al Wathba
60	Abu Dhabi Company for Onshore Oil Operations (ADCO)	2007	ADCO Project No. P. 90117 at BAB
61	Kahalda Petroleum Company, Egypt	2007	Salam Gas Train Project, SGT 3 & 4/by Petrofac
62	TECOM Investment, Dubai	2008	International Media Production Zone (IMPZ), Dubai
63	TECOM Investment, Dubai	2008	Project: Dubai Industrial City Sewage Treatment Plant
64	Department of Civil Aviation (DCA), Dubai	2008	DWC Airport, Project - JXB1/BLD/441
65	Abu Dhabi Sewerage Services Company (ADSSC)	2008	Sewage Pumping Station at Al Ain
66	Abu Dhabi Transmission & Despatch Company (TRANSCO)	2008	Contract N - 5797, 132/22KV Substation at Yas Island

Sewage Pumping Station at Dubai World Trade Centre



Yas Marina Circuit Project, Abu Dhabi



Scada System Cabinet at Shaikh Zayed Road, Dubai

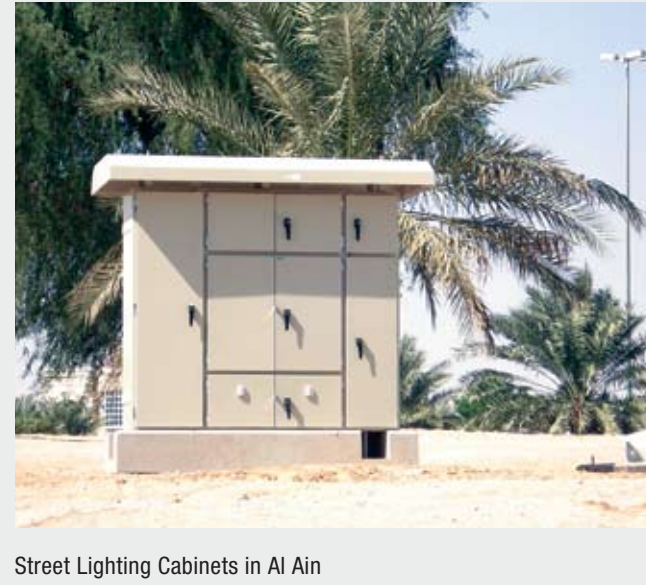


Project Supply Record

Project Supply Record

SR. No.	CLIENT	YEAR SUPPLIED	REMARKS
67	TECOM Investment, Dubai	2008	Dubai Industrial City Phase 1 & 2
68	Public Works Authority (ASHGHAL), Qatar	2008	Rehabilitation of Steet Lighting in Doha, Qatar
69	NAKHEEL, Dubai	2008	Dubai Maritime City
70	Department of Civil Aviation (DCA), Dubai	2008	DWC Airport - JXB 103, Jebel Ali International Airport
71	Oman Wastewater Services Company S.A.O.C.	2008	1x2500m ³ /hr STP at MSQ & 3x2500m ³ /hr STP at SAQ
72	RasGas, Qatar	2008	CCWP - 2 Project/by Tyco Termal-Dodsals PTE
73	EQUATE Petrochemical Company, Kuwait	2008	Olefins II Project/by Fluor Daniel Consultants
74	Petrodar Operating Company, Sudan	2008	Central Processing Facility (CPF)
75	Qatar Petroleum (QP)	2009	EPIC of Ras Laffan Port Expansion Project
76	Dubai Electricity & Water Authority (DEWA)	2009	Scada System Cabinet at Shaikh Zayed Road, Dubai
77	Emirates Aluminium (EMAL), Abu Dhabi	2009	Potline DCCU Sunshades
78	Sharq Petroleum, Jubail, KSA	2009	Linde Sharq Project Third Expansion
79	Saudi Electric Company (SEC)	2009	Al-Qurayyah Combined Cycle Power Plant (PH-C)/by Arabian Bemco
80	Abu Dhabi Sewerage Services Company (ADSSC)	2009	0 - 1086A, Al Saad WWTP (Lot - A)
81	Dolphin Energy	2009	Tawelah - Fujairah Gas Pipeline/by Stroytransgaz PJSC-WorleyParsons
82	Fujairah Asia Power Company	2010	Fujairah F2 IWPP/by Doosan Heavy Industries & Construction Co.
83	Saudi Basic Industries Corporation (SABIC)	2010	Saudi Kayan Petrochemical Complex SU-72601 Sea Water Intake
84	Tourism Development & Investment Company (TDIC), Abu Dhabi	2010	Yas Marina Circuit, Abu Dhabi
85	Kuwait Oil Company (KOC)	2010	Metering Skid by Alderley FZE/Petrofac International
86	Roads & Transport Authority (RTA), Dubai	2010	RTA Project: R885, Al Ittihad Road - 2 Improvement
87	Al Ain Distribution Company (AADC)	2010	AADC Contract - A4312, A4313 & A4314, DMA Panel kiosk
88	Dubai Electricity & Water Authority (DEWA)	2010	The Villa Project, Dubailand
89	Groupment Berkine, Algeria	2010	El Merk Algeria Project/by Petrofac
90	Qatar Petroleum (QP)	2010	UPS System for STP Dukhan Project
91	Saudi Aramco	2010	Karan Project/ by J Ray McDermott, Dubai
92	Civil Aviation Authority, Qatar	2010	New Doha International Airport, Doha, Qatar
93	Dubai Municipality	2010	PJ - 9306 - Landscaping & Irrigation Works
94	Abu Dhabi Municipality	2010	Upgrading of Al Salam Street
95	Abu Dhabi Gas Industries Limited (GASCO)	2010	NGI Project/ by Punj Lloyd
96	Muscat Electricity Distribution Company (MEDC)	2011	Package Substation in Wadi Al - Amrat, Muscat, Oman
97	Sharjah Municipality	2011	Stormwater Control Panel at Al Khan, Sharjah
98	Dubai Municipality	2011	Irrigation Control Panel at Dubai Bypass Road
99	Dubai Electricity & Water Authority (DEWA)	2011	Muhammed Bin Rashid Housing, Al Barsha, Dubai
100	Dubai Electricity & Water Authority (DEWA)	2011	Veneto Villas, Dubai Waterfront Project
101	Dubai Electricity & Water Authority (DEWA)	2011	Arabian Ranches Equestrian Villas

Al Ain Distribution Company - DMA Panel Kiosk



Street Lighting Cabinets in Al Ain



Street Lighting Cabinets at Dubai Silicon Oasis



SR. No.	CLIENT	YEAR SUPPLIED	REMARKS
102	Abu Dhabi National Oil Company (ADNOC)	2011	Borouge Expansion
103	Qatar Petroleum (QP)	2011	Qatar Foundation Education City
104	Royal Dutch Shell	2011	Majnoon Oil Field, Iraq/by Petrofac
105	Abu Dhabi Oil Refining Company (TAKREER)	2011	Takreer Package 2/by Yokogawa ME
106	International Petroleum Investment Company (IPIC)	2011	Habshan - Fujairah Crude Oil Pipeline/ by CPECC
107	Abu Dhabi Oil Refining Company (TAKREER)	2011	Ruwais Refinery Expansion/by SK Engg & Construction
108	Al Ain Distribution Company (AADC)	2011	A - 6143, Water Connection Replacement Work at Various Areas, Al Ain
109	Abu Dhabi Municipality - PRFD	2011	PRFD - O&M - C - 101, Irrigation & Landscaping Works at Presidential Palace
110	Sorouh Real Estate	2011	Al Ghadeer Development Project, Phase 1
111	Abu Dhabi Transmission & Despatch Company (TRANSCO)	2011	N - 6820, Al Ain Water Distribution Network
112	MUDABLA	2011	Sowwah Island Development- Road & Infrastructure Work
113	Abu Dhabi Airports Company (ADAC)	2011	Contract CT294/ADAC/092, Al Ain International Airport
114	Tourism Development & Investment Company (TDIC), Abu Dhabi	2011	Water Treatment Plant at Sir Baniyas Island
115	Aluminium Bahrain (ALBA)	2011	ALBA Plant Security Project
116	Ministry of Defence, Oman	2011	Package Substation at Wudham
117	Ministry of Electricity & Water (MEW), Kuwait	2011	MEW Contract 3964/2009-2010
118	Roads & Transport Authority (RTA), Dubai	2011	R840 - 2 Landscaping of Several Roads In Dubai
119	The Bahrain Petroleum Company (BAPCO)	2011	Project: HIDD Industrial Area Distribution Point & Gas Main
120	Federal Electricity & Water Authority (FEWA), Dubai	2011	Contract No. 1 (E18/2010)
121	Dubai Electricity & Water Authority (DEWA)	2012	Nakheel's Al Furjan Project, Dubai
122	Qatar Petroleum (QP)	2012	Gas Sweetening Facilities In Messaied and Dukhan/ by Petrofac
123	Abu Dhabi Gas Industries Limited (GASCO)	2012	Habshan 5 IGD / by Technomont - Kharafi JV
124	Turkmenogas, Turkmenistan	2012	South Yoloten Gas Field Development Project/ by Petrofac
125	Abu Dhabi Gas Development Company (Al Hosn Gas)	2012	SHAH Gas Development Program/by Samsung Engg.
126	Dubai Electricity & Water Authority (DEWA)	2012	Contract: CW/308A12008
127	Abu Dhabi Gas Development Company (Al Hosn Gas)	2012	SHAH Gas Development - Sulphur Recovery Units/by Saipem
128	Abu Dhabi Distribution Company (ADDC)	2012	D - 10924, Water Supply to ADCO - GASCO Facilities at Buhasa & Habshan
129	Saudi Aramco	2012	Upgrade Crude Gathering & Power Supply Facilities Phase 1, Safaniyah
130	Abu Dhabi Sewerage Services Company (ADSSC)	2012	Contract O - 1904.1, Construction of Sewage Connections PH - 3
131	Kuwait Oil Company (KOC)	2012	New Booster Station BS - 171 (Contract No. 45283 Job No. 032092)
132	Abu Dhabi Distribution Company (ADDC)/TDIC	2012	Contract D - 9376, Eastern Mangroves Development
133	Abu Dhabi Sewerage Services Company (ADSSC)	2012	O - 1763, Construction of Irrigation Pumping Station IPS - 3A at Abu Dhabi
134	Abu Dhabi Municipality	2012	PRFD Contract 410 - 1, Irrigation & Landscaping Works
135	Saudi Aramco	2012	Khuff Gas Project/by AEG Power Solutions, France
136	Arab Shipbuilding Repair Engineering Company, Bahrain	2012	ASRY North Development Phase - 1

Yas Marina Circuit Project, Abu Dhabi



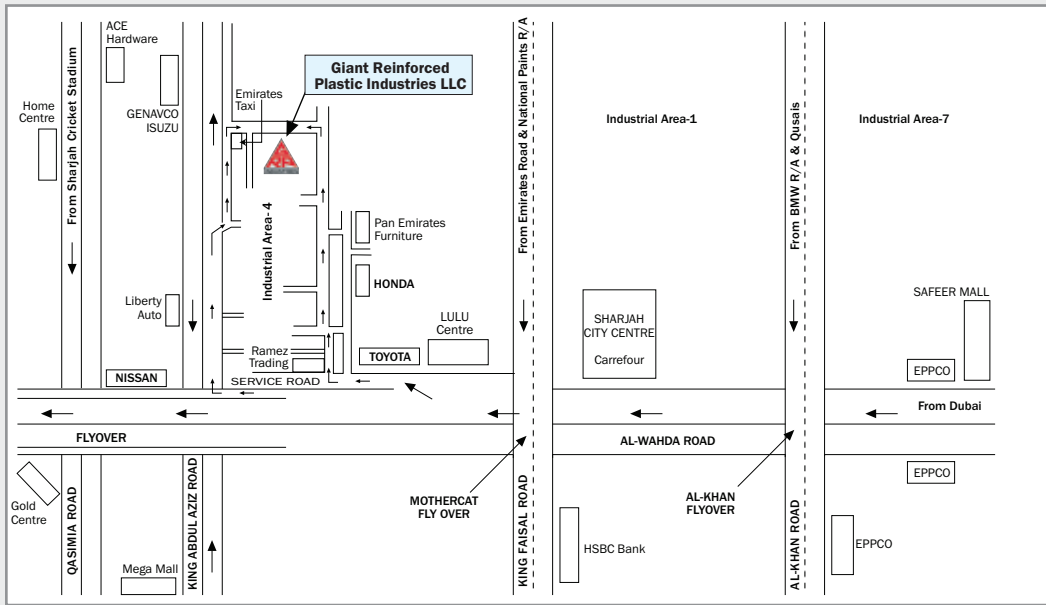
Package Substation in Wadi Al - Amrat, Muscat, Oman



Kuwait Oil Company (KOC) - Metering Skid

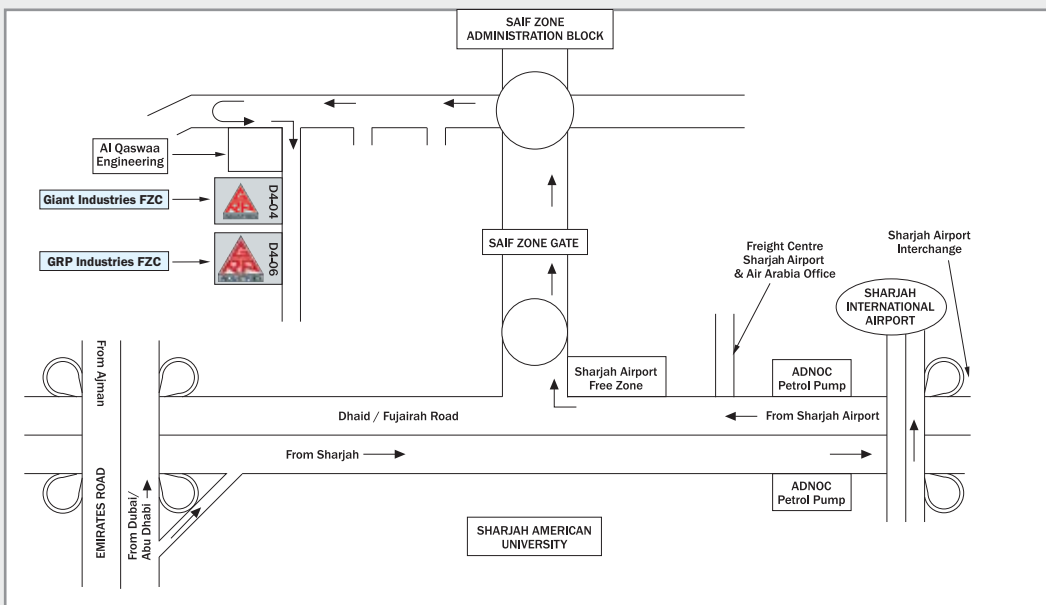


GIANT REINFORCED PLASTIC INDUSTRIES LLC



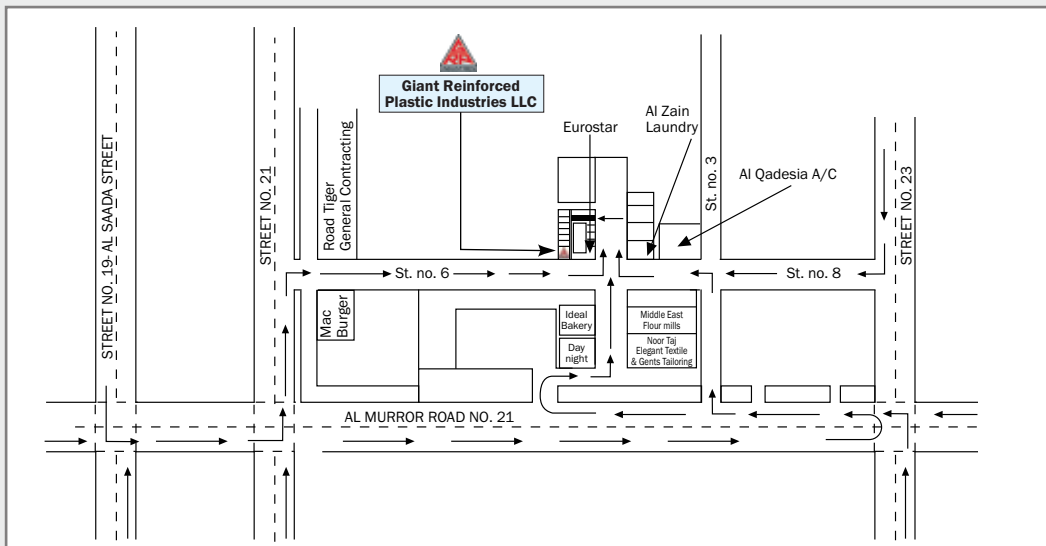
SHARJAH INDUSTRIAL AREA

GRP INDUSTRIES FZC & GIANT INDUSTRIES FZC



SAIF ZONE - SHARJAH

GIANT REINFORCED PLASTIC INDUSTRIES LLC



ABU DHABI BRANCH